

# Northumbria Research Link

Citation: Hounkpe, Sena, Aina, Martin, Crapper, Martin, Adjovi, Edmond and Mama, Daouda (2013) Influence of Salinity on Duckweed Growth and Duckweed Based Wastewater Treatment System. Journal of Water Resource and Protection, 5 (10). pp. 993-999. ISSN 1945-3094

Published by: Scientific Research

URL: <http://dx.doi.org/10.4236/jwarp.2013.510103> <<http://dx.doi.org/10.4236/jwarp.2013.510103>>

This version was downloaded from Northumbria Research Link: <http://nrl.northumbria.ac.uk/27017/>

Northumbria University has developed Northumbria Research Link (NRL) to enable users to access the University's research output. Copyright © and moral rights for items on NRL are retained by the individual author(s) and/or other copyright owners. Single copies of full items can be reproduced, displayed or performed, and given to third parties in any format or medium for personal research or study, educational, or not-for-profit purposes without prior permission or charge, provided the authors, title and full bibliographic details are given, as well as a hyperlink and/or URL to the original metadata page. The content must not be changed in any way. Full items must not be sold commercially in any format or medium without formal permission of the copyright holder. The full policy is available online: <http://nrl.northumbria.ac.uk/policies.html>

This document may differ from the final, published version of the research and has been made available online in accordance with publisher policies. To read and/or cite from the published version of the research, please visit the publisher's website (a subscription may be required.)



**Northumbria**  
**University**  
NEWCASTLE



**UniversityLibrary**

# Influence of Salinity on Duckweed Growth and Duckweed Based Wastewater Treatment System

Sena Peace Hounkpe Wendeou<sup>1</sup>, Martin Pepin Aina<sup>1</sup>, Martin Crapper<sup>2</sup>, Edmond Adjovi<sup>1</sup>,  
Daouda Mama<sup>3</sup>

<sup>1</sup>Civil Engineering Department, Université d'Abomey-Calavi, Cotonou, Benin

<sup>2</sup>School of Engineering, The University of Edinburgh, Edinburgh, UK

<sup>3</sup>Faculty of Science and Technology, Université d'Abomey-Calavi, Cotonou, Benin

Email: senapeace@yahoo.fr

Received August 10, 2013; revised September 11, 2013; accepted September 28, 2013

Copyright © 2013 Sena Peace Hounkpe Wendeou *et al.* This is an open access article distributed under the Creative Commons Attribution License, which permits unrestricted use, distribution, and reproduction in any medium, provided the original work is properly cited.

## ABSTRACT

The growth of duckweed (*Spirodela polyrrhiza*) was investigated in an outdoor batch system under 15 different conductivities ranging from 200  $\mu\text{S}/\text{cm}$  to 3000  $\mu\text{S}/\text{cm}$  with average 110  $\mu\text{mol}/\text{m}^2$  daylight intensity. The growth was performed in an anaerobically treated domestic wastewater using an initial plants population of 50 fronds. Increase in Relative Growth Rate—RGR—(in terms of fresh weight and number of fronds) had a significant non-linear (polynomial) relationship with the conductivity. The maximum RGR related to fresh weight of 0.176 was observed at the conductivity of 1200  $\mu\text{S}/\text{cm}$  while the maximum RGR related to fronds number was 0.193 at the conductivity of 800  $\mu\text{S}/\text{cm}$ . The optimum range for duckweeds growth was found to be between conductivities of 600  $\mu\text{S}/\text{cm}$  and 1400  $\mu\text{S}/\text{cm}$ . The maximal rates of removal of COD of 14.5 mg/day,  $\text{PO}_4^{2-}$  of 0.65 mg/day, NTK of 15.68 mg/day, faecal coliforms of 100% and turbidity of 80.8% were observed in this range. The COD and  $\text{PO}_4^{2-}$  removal rates were highly correlated to the growth rate, with the correlation factor of up to 0.783 and, then to the conductivity. The NTK reduction was positively related to the conductivity.

**Keywords:** Duckweed; *S. polyrrhiza*; Growth Rate; Conductivity; Domestic Wastewater

## 1. Introduction

Duckweeds are the simplest smallest aquatic flowering plants [1]. They grow in colonies forming a green dense and uniform mat covering the surface of the water. They belong to the scientific family of monocotyledon floating plants *Lemnaceae* which consist of 4 genera: *Lemna*, *Spirodela*, *Wolffia* and *Wolffiella* and 28 species [1,2]. Their leaves and stems are not distinguishable like in other vascular plants; they are fused to form the so called “fronds” [3]. In adequate growth conditions (temperature, nutrient, light intensity, salinity), these plants can double their total fronds number and biomass every 2 to 4 days [3-6]. They are one of the plants with the most vigorous growth on the earth [2,7].

The characteristics that make this plant grow rapidly in polluted waters make it an ideal candidate for large-scale application for nutrient removal and water purification. They are probably the best macrophyte to convert nutria-

ent to biomass [3,8-10]. Duckweeds systems have been used to remove pollutants from varying qualities of domestic wastewater [3,6,11-14], septage [15], and agricultural wastewater such as swine water [13,16]. It has been reported that these plants help in the uptake of heavy metals from polluted waters as well as improve the overall quality of eutrophic water bodies [17-19]. Compared with most other aquatic plants, duckweeds have a greater potential and the overall low cost as treatment system because of their unique morphological and physiological properties, their high nutritional value and the diverse reuse opportunity they offer [2,7,13,20-22].

However, some studies' results suggest that the distribution of duckweeds is influenced by a number of factors, such as nutrients availability [23], pH [24], light intensity [6], temperature [1,2,6,25], the dissolved oxygen content [26] and the salinity [13]. It has been reported that the growth rate of aquatic plants is inversely proportional to the increase in dissolved salt content of the wa-

ter and their efficiency in water purification. A search of the literature for evidence concerning the effects of salinity on duckweeds has revealed little information. The present state of knowledge about the influence of salinity on duckweeds growth is summarized as duckweeds grow on a wide range of saline water and the observation of healthy duckweeds growth at a conductivity of 1460  $\mu\text{S}/\text{cm}$  [2]. Apparently, no observations were recorded on wastewaters at different salinity and so one cannot judge on the natural tolerance limits for the duckweed.

The purpose of this research was to investigate the effect of wastewater dissolved salt content on the growth of duckweeds (*Spirodela*) when a duckweed system is employed for municipal wastewater treatment. Also, the effect of plant growth on the removal efficiencies of certain pollutants was investigated.

## 2. Materials and Methods

### 2.1. Plant Material and Culture Medium

The duckweeds (*Spirodela*) clones used were collected on the lake Nokoue located in southern Benin (West Africa). They have been grown for several months in wastewater treatment ponds on the University Campus of Abomey-Calavi (Benin). Fifty clones of healthy plants were selected from the ponds and were introduced directly into the culture medium without a further acclimatization. The culture medium was domestic wastewater anaerobically treated in an anaerobic waste stabilisation pond.

The behaviour of duckweeds during an experiment depends on its previous immediate history which may affect results [27]. To avoid systematic errors related to the use of population of different history, the experiments were carried out simultaneously in parallel under the same conditions with plants from the same point.

### 2.2. Experimental Design

Plastics containers of 16 cm of mean diameter, 14 cm of height were filled with 1500 mL of domestic wastewater which had received an anaerobic treatment and had its conductivity adjusted. The containers were placed outdoor under natural conditions. The initial conductivity of the pre-treated wastewater was 712  $\mu\text{S}/\text{cm}$ . Fifteen containers have been used with the conductivity varying from 200  $\mu\text{S}/\text{cm}$  to 3000  $\mu\text{S}/\text{cm}$ , that is, salinity from 154 mg/L to 2276 mg/L. To obtain the conductivity of 200  $\mu\text{S}/\text{cm}$  to 600  $\mu\text{S}/\text{cm}$  (below the initial conductivity), the pre-treated domestic wastewater was diluted with distilled water. The conductivities from 800  $\mu\text{S}/\text{cm}$  to 3000  $\mu\text{S}/\text{cm}$  have been adjusted by adding NaCl to the pre-treated wastewater. The cultures were started with 50 fronds of duckweeds. The total experimental period was 10 days. The plants initially covered 25% of the surface of the water in the containers. This initial density was

used to prevent very dense coverage and excess overlaps of fronds of duckweeds during the experiment, which could affect plants growth [2]. The number of fronds was counted at the beginning and the end of the experiments. The total mass of plants was also measured at the beginning and the end of the experiments. The pre-treated domestic wastewater used was not replaced during the whole period of experimentation.

### 2.3. Techniques of Measurement and Analysis

The growth rates were measured by counting separately the number of fronds and weighing the wet biomass at the beginning and the end of the experimental period. The wet mass was measured by removing the excess water by placing and rolling the plants cautiously between absorbent paper tissues and by weighing the biomass immediately after that. Knowing the biomass weight, the plants relative growth rate (RGR) is calculated by Equation (1) below [12,24]:

$$\text{RGR} = \left[ \ln \left( m_f / m_i \right) \right] / t \quad (1)$$

where,  $m_i$  and  $m_f$  are respectively the initial and the final wet weight (or number of fronds) at the start and the end of the experimental period and  $t$  is the number of days between 2 weighing or counting.

The biomass doubling time can be calculated by Equation (2):

$$\text{Doubling Time} = \left[ \ln(2) \right] / \text{RGR} \quad (2)$$

To estimate the treatment performance of the duckweeds under different salinities, some parameters were measured. The environmental parameters such as the pH, the temperature, the conductivity, the dissolved oxygen, the light intensity and the Total Dissolved Solids (TDS) were measured on daily basis. The chemical oxygen demand (COD), the suspended solids, the Nitrogen Total Kjeldhal (NTK), the phosphate and the faecal coliforms were determined at the beginning and the end of the experimental period.

The pH, temperature, conductivity, light intensity and dissolved oxygen were measured on site. The pH and temperature were measured with the pH-meter pH 3110 SET 3 (WTW) of  $\pm 0.01$  upH of accuracy in accordance with the standard *NF T 90-008*.

The electrical conductivity, in  $\mu\text{S}/\text{cm}$  (micro-Siemens per centimetre), was measured with a conductivity-meter pH/EC/TDS Waterproof Family in accordance with the standard *NF EN 27888 class index T 90-031*. The salinity was deduced from the measured conductivity in accordance with the standard *NF T 90-111* using the Equation (2) [28].

$$\text{Salinity} \left( \text{in } \frac{\text{mg}}{\text{L}} \right) = K * \text{conductivity} (\mu\text{S}/\text{cm}) \quad (3)$$

$K$  is a constant depending on the conductivity.

The dissolved oxygen was measured with the oxymeter Oxi 730 in accordance with *NF T 90-106 standard*. The COD and the NTK were measured based on the *NF T 90-101 and NF T 90-110*, respectively. The concentration of phosphate was determined by molecular adsorption using the spectrophotometer DR 2800. The counting of faecal coliforms in the water was done in accordance the standard *NF T-90416*.

The relation between the salinity, growth rate and removal performances of the duckweed was studied by means of statistical analysis using the principal component analysis (PCA) by correlation matrix.

### 3. Results and Discussion

#### 3.1. Environmental Conditions

The observed environmental conditions during the experimental period were quite adequate for a good growth of the duckweeds.

The minimum temperatures of water in the containers varied from 25.4°C to 25.6°C and the maximum temperatures varied from 27.3°C to 27.7°C, with an overall range of average temperatures of water of 26.4°C ± 0.8°C to 26.7°C ± 0.7°C. The average water temperatures showed reasonably low variations and always stayed within the reported optimum range of duckweeds growth, 20°C to 30°C [1,25].

The minimum and maximum pH values varied from 6.47 to 7.15 and 9.04 to 9.69, respectively. The average pH values, varying from 7.5 ± 0.8 to 8.1 ± 0.9, fell within the reported optimum pH values range of duckweeds growth [24]. After 3 days of experiment, a presence of algae in the containers was noticed. An increase of pH was observed from the beginning of the experiment to reach its higher value in the range of the maximum values of pH registered (Figure 1). After then, the pH dropped back to normal level, around 7, very rapidly. This change of water pH during the experiment was directly associated with the growth of phototrophic algae which could result in the depletion

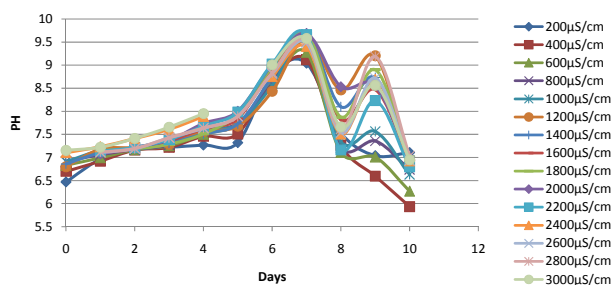


Figure 1. Changes of pH of the duckweed ponds at different water conductivities during the experimental period.

of carbon dioxide in water and, consequently, a high water pH. The drop in the pH value was due to the increase of duckweed coverage density to a value close to 100% which led to the depletion or disappearance of the algae biomass.

The daylight intensity recorded during the experimental period varied between a minimum value of 56  $\mu\text{mol}/\text{m}^2$  and a maximum value of 396  $\mu\text{mol}/\text{m}^2$ , with an average daily value of 110  $\mu\text{mol}/\text{m}^2$ . A relatively good growth rate of duckweeds has been reported at this range of light intensity [12]. The average daily value was smaller than 300  $\mu\text{mol}/\text{m}^2$ , the reported light intensity saturation value for duckweeds [29,30].

The conductivities and TDS were stable at the beginning of the experiment in the containers. A rapid increase of the conductivity and the TDS was observed in all the containers during the experimental periods between the sixth and seventh days when the pH started dropping down, and slowed than after the seventh day (Figures 2 and 3). This increase in conductivity was associated with the evapotranspiration phenomenon related to the increase of plant biomass in the ponds.

#### 3.2. Visual Observation

The three containers with wastewater at conductivities of 800, 1200 and 1400  $\mu\text{S}/\text{cm}$  showed very green healthy plants with new fronds size visibly bigger than the initial fronds size. There was a full water surface coverage by the plants in those containers. A reduction in plants size was observed in the containers with conductivity from

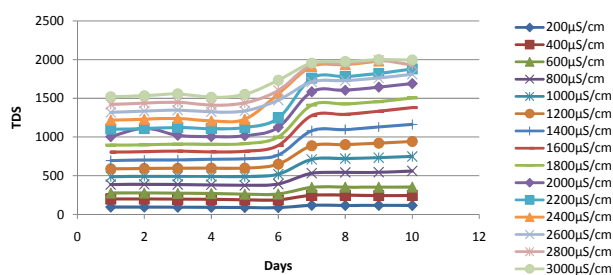


Figure 2. Changes in TDS of the duckweed ponds during the experimental period.

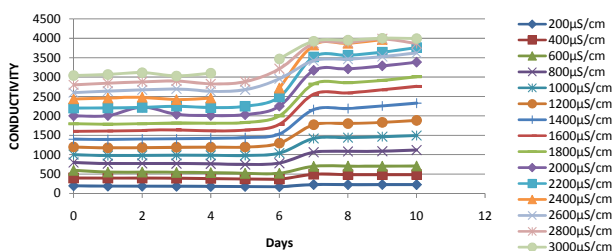


Figure 3. Changes in conductivity of the duckweed ponds during the experimental period.

600 to 200  $\mu\text{S}/\text{cm}$  and from 1600 to 3000  $\mu\text{S}/\text{cm}$ . This reduction of plants size from 1600 to 3000  $\mu\text{S}/\text{cm}$  was followed by a change in the fronds colour to green-yellowish green from the conductivity of 1800  $\mu\text{S}/\text{cm}$ . The smallest fronds sizes were observed with conductivity of 2600, 2800 and 3000  $\mu\text{S}/\text{cm}$ .

### 3.3. Effect of Salinity on the Growth Rate

The relative growth rate increased from 0.141/day at a conductivity of 200  $\mu\text{S}/\text{cm}$  to a maximum value of 0.176 /day at a conductivity of 1200  $\mu\text{S}/\text{cm}$ . As the conductivity increased above 1200  $\mu\text{S}/\text{cm}$ , the relative growth started to decline and reached the minimum value of 0.81 /day at conductivity of 2800  $\mu\text{S}/\text{cm}$  (Figure 4). These represented a biomass doubling time varying from 3.9 days to 8.5 days. After 10 days, when the experiments were terminated, an average maximum increase in plant mass of 4.82 g, about five times the initial value was observed, when the conductivity was 1200  $\mu\text{S}/\text{cm}$ . The greatest and smallest unit fronds masses of 0.021 g/frond with a leave size up to 9 mm and 0.015 g/frond with leave size less than 6 mm were obtained at the conductivities of 1000  $\mu\text{S}/\text{cm}$  and 2800  $\mu\text{S}/\text{cm}$ , respectively. This confirmed the visual observation.

It was observed that the relative growth rate based on fronds number is greater or smaller than that based on the wet weight depending on the conductivity with a different trend. This was due to the fact that the fronds sizes, and consequently their unit masses, were not identical at all conductivities.

The salinity was the controlling factor for duckweed growth. The growth rate of duckweeds as a function of the conductivity, after fitting, followed a polynomial pattern with the optimum at the conductivity of 1200  $\mu\text{S}/\text{cm}$ . The correlation factor  $R^2$  was 0.903 for the wet weight RGR and 0.7003 for fronds count RGR (Figures 4 and 5). As a conclusion, it appears better to use the RGR related to wet weight when predicting growth as function of salinity.

The conductivity from 2000  $\mu\text{S}/\text{cm}$  to 3000  $\mu\text{S}/\text{cm}$  reflected conditions with conductivity being a growth limi-

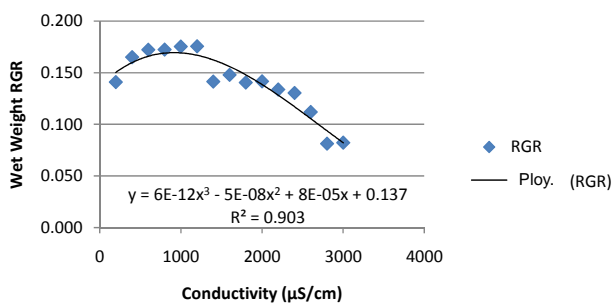


Figure 4. Duckweeds wet weight relative growth rate (RGR) as function of conductivity.

ting factors. Applying conductivity different from the optimum conductivity of 1200  $\mu\text{S}/\text{cm}$  increased the biomass doubling time. The optimum conductivity is found to be 1200  $\mu\text{S}/\text{cm}$  with the favourable range between 600 and 1400  $\mu\text{S}/\text{cm}$ .

### 3.4. Duckweeds Ponds Performances

The initial composition of the anaerobically treated waste water used was shown in Table 1. The water in the containers of conductivities 200, 400 and 600  $\mu\text{S}/\text{cm}$  was diluted with the dilution coefficients equal to 3.73, 1.79, and 1.20, respectively.

The increase in biomass of duckweeds is followed by a removal of pollutants from the wastewater. The removal efficiencies of certain parameters in the wastewater as affected by the plant growth were investigated. Table 2 shows the removal efficiency of certain selected pollutants present in the wastewater.

The reduction of the turbidity of the water ranged between 56.7% and 80.8% (Table 2). The turbidity seemed to be in a weak positive correlation with the COD, the phosphate and faecal coliforms. No direct relation between the reduction in turbidity and the plants growth or conductivity was observed (Table 3). This indicated the level of removal of suspended solids from the water. It

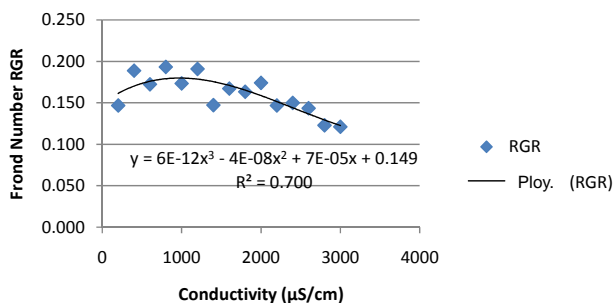


Figure 5. Duckweeds frond number relative growth rate (RGR) as function of conductivity.

Table 1. Initial characteristics of the anaerobically treated domestic wastewater.

Parameters	Units	Value
pH		6.9
Temperature	$^{\circ}\text{C}$	25.7
Conductivity	$\mu\text{S}/\text{cm}$	712
COD	$\text{mg O}_2/\text{L}$	175.4
Phosphate	$\text{mg}/\text{L}$	13.60
NTK	$\text{mg}/\text{L}$	15.68
Faecal Coliform	number/100 mL	$3.6 \times 10^4$
Turbidity	NTU	6.17

**Table 2. Certain pollutants removal efficiency of the duckweeds based ponds at different conductivities.**

Conductivity ( $\mu\text{S}/\text{cm}$ )	Plant growth		COD removal		Phosphate removal		NTK removal		Faecalcoliforms removal	Turbidity removal
	M formed g/day	RGR ( $\text{Day}^{-1}$ )	mg/m <sup>2</sup> -day	%	mg/m <sup>2</sup> -day	%	mg/m <sup>2</sup> -day	%		
200	2.92	0.141	84.67	36.2%	12.66	69.8%	9.73	100.0%	83.5%	74.8%
400	4.10	0.165	338.15	69.4%	28.79	76.2%	5.67	15.6%	100.0%	70.5%
600	4.74	0.172	577.77	79.5%	30.26	53.7%	64.99	100.0%	99.7%	72.4%
800	4.69	0.172	723.08	82.9%	29.59	43.8%	77.99	100.0%	98.9%	72.8%
1000	4.82	0.175	642.74	73.7%	31.58	46.7%	77.99	100.0%	100.0%	80.8%
1200	4.48	0.176	413.19	47.4%	32.33	47.8%	77.99	100.0%	99.9%	62.2%
1400	3.14	0.141	413.19	47.4%	25.37	37.5%	69.63	89.3%	100.0%	66.0%
1600	3.75	0.148	413.19	47.4%	31.33	46.3%	77.99	100.0%	100.0%	57.6%
1800	3.44	0.140	275.46	31.6%	22.38	33.1%	77.99	100.0%	76.4%	57.1%
2000	3.42	0.142	229.55	26.3%	29.84	44.1%	77.99	100.0%	99.9%	56.7%
2200	2.56	0.134	91.82	10.5%	26.86	39.7%	75.20	96.4%	100.0%	78.7%
2400	2.85	0.130	229.55	26.3%	25.37	37.5%	75.20	96.4%	100.0%	63.8%
2600	2.36	0.112	137.73	15.8%	23.38	34.6%	77.99	100.0%	100.0%	63.1%
2800	1.38	0.081	229.55	26.3%	15.42	22.8%	77.99	100.0%	100.0%	64.2%
3000	1.50	0.082	137.73	15.8%	17.90	26.5%	77.99	100.0%	99.8%	76.6%

**Table 3. Correlation matrices inter-parameters.**

Variables	Conductivity	Wet Weight RGR	PO <sub>4</sub> <sup>3-</sup> removal in mg/day	NTK removal in mg/day	COD removal in mg/day	COD removal in %	PO <sub>4</sub> <sup>3-</sup> removal in %	NTK removal in %	FC removal in %	Turbidity removal in %
Conductivity	1.000									
Wet Weight RGR	-0.826	1.000								
PO <sub>4</sub> <sup>3-</sup> removal in mg/day	-0.305	0.745	1.000							
NTK removal in mg/day	0.634	-0.205	0.278	1.000						
COD removal in mg/day	-0.529	0.706	0.654	0.192	1.000					
COD removal in %	-0.790	0.783	0.534	-0.233	0.905	1.000				
PO <sub>4</sub> <sup>3-</sup> removal in %	-0.864	0.649	0.221	-0.845	0.164	0.526	1.000			
NTK removal in %	0.363	-0.215	-0.149	0.688	-0.008	-0.295	-0.598	1.000		
FC removal in %	0.216	-0.009	0.459	0.272	0.241	0.127	-0.117	-0.132	1.000	
Turbidity removal in %	-0.267	0.100	-0.114	-0.271	0.138	0.252	0.232	-0.096	0.163	1.000

can be observed from this table that the higher the plant relative growth, the higher the removal efficiency of the chemical oxygen demand and the phosphate. In the first three containers of conductivities of 200, 400 and 600  $\mu\text{S}/\text{cm}$ , due to the dilution of the wastewater, meaning low initial value of pollutants concentrations, the removal rate of the pollutant (in percentage) appears high

even though the mass of pollutant removed per day is smaller. For example, the masses of phosphate removed were 28.79 mg/m<sup>2</sup> day and 32.33 mg/m<sup>2</sup> day at conductivities of 400  $\mu\text{S}/\text{cm}$  and 1200  $\mu\text{S}/\text{cm}$ , respectively, while the removal rates expressed in percentage were 76.28% and 47.79%, respectively. Then, when the initial concentrations in pollutant in different ponds are not the

same, it is better to compare the efficiency using the amount of the pollutant removed rather than the percentage of pollutant removed. The highest level of COD reduction was from 1754 mg/L to less than 30 mg/L with a removal rate greater than 723.1 mg/m<sup>2</sup>·day or 82.9%. A similar reduction rate was observed in some previous studies [12]. This removal rate was observed at the conductivity of 800 µS/cm where the wet weight RGR was 0.172/day. As for the phosphate, the maximum removal rate of 32.33 mg/m<sup>2</sup>·day was obtained at a conductivity of 1200 µS/cm and the wet weight RGR was 0.176 /day (**Table 2**). Apart from the plant growth, the conductivity affected the COD removal; the COD reduction was better at lower conductivity than at higher conductivity.

The COD and the phosphate removal rates were in significant positive correlation with the RGR and the biomass production (**Table 3**). This table showed that the COD and the phosphate contributed directly to the increase of plant biomass.

It has been observed a strong correlation related to the conductivity, inversely proportional to the plant relative growth rate; this result was showing that the conductivity, and then the salinity, was a limited factor for plants growth. This plants development was controlled, as shown by the correlation matrix, by the PO<sub>4</sub><sup>-</sup> and COD removal rates.

The reduction of faecal coliforms and NTK of 100% was achieved in most of the containers (**Table 2**).

Due to this complete removal of NTK and faecal coliforms, it was not possible to identify the real correlation between the reduction of these parameters and the plants growth. The correlation coefficients obtained were positive but not really significant (**Table 3**).

Average masses of 0.61 g and 1.3 g of plant biomass were formed per 1 mg of phosphate and 1 mg of NTK removed respectively.

#### 4. Conclusion

For an optimum use of duckweed for wastewater treatment, the conductivity of the water should preferably be between 600 and 1400 µS/cm. At this range of conductivities the wet weight relative growth rate reached its maximal value of 0.176/day. Out of this range, the growth rate of the plants and therefore the removal performances declined. The maximum rates of removal of COD of 723.1 mg/m<sup>2</sup>·day, PO<sub>4</sub><sup>-</sup> of 32.33 mg/m<sup>2</sup>·day, NTK of 77.99 mg/m<sup>2</sup>·day, faecal coliforms of 100% and turbidity of 80.8% were observed in this range. This is because the rate of removal of phosphate and COD had a significant positive correlation with the duckweed growth rate. Conductivity (greater than 2000 µS/cm), and corresponding salinity (greater than 1517 mg/L), inhibited plant growth.

#### 5. Acknowledgements

This paper reports results from a research work carried out with the financial support of Islamic Development Bank and the technical support of the Laboratory of Water Science and Technology of the University of Abomey-Calavi (Benin).

#### REFERENCES

- [1] W. S. Hillman, "The Lemnaceae, or Duckweeds," *The Botanical Review*, Vol. 27, No. 2, 1961, pp. 221-287. <http://dx.doi.org/10.1007/BF02860083>
- [2] L. Bonomo, G. Pastorelli and N. Zambon, "Advantages and Limitations of Duckweed-Based Wastewater Treatment Systems," *Water Science and Technology*, Vol. 35, No. 5, 1997, pp. 239-246. [http://dx.doi.org/10.1016/S0273-1223\(97\)00074-7](http://dx.doi.org/10.1016/S0273-1223(97)00074-7)
- [3] J. R. Caicedo Bejarano, "Effect of Operational Variables on Nitrogen Transformations in Duckweed Stabilization Ponds," Ph.D. Thesis, The UNESCO-IHE Institute for Water Education, Delft, 2005.
- [4] E. Landolt and R. Kandeler, "The Family of Lemnaceae—A Monographic Study: Phytochemistry, Physiology, Application, and Bibliography. (Vol. 2 of Monograph)," Geobotanical Institute of the ETH, Stiftung Rubel, 1987.
- [5] E. Landolt, "The Family of Lemnaceae—A Monographic Study: Vol 1: Morphology, Karyology, Ecology, Geographic Distribution, Systematic Position, Nomenclature, Descriptions," Veröffentlichungen des Geobotanischen Institutes der ETH, Stiftung Rubel, Zurich, 1986, p. 566.
- [6] R. M. Harvey and J. L. Fox, "Nutrient Removal Using Lemna Minor," *Water Pollution Control Federation*, Vol. 45, No. 9, 1973, pp. 1928-1938.
- [7] J. Xu, *et al.*, "Production of High-Starch Duckweed and Its Conversion to Bioethanol," *Biosystems Engineering*, Vol. 110, No. 2, 2011, pp. 67-72. <http://dx.doi.org/10.1016/j.biosystemseng.2011.06.007>
- [8] B. Ingemarsson, *et al.*, "Nitrogen Utilization in Lemna II. Studies of Nitrate Uptake Using <sup>13</sup>NO<sub>3</sub><sup>-</sup>," *Plant Physiology*, Vol. 85, No. 3, 1987, pp. 860-864. <http://dx.doi.org/10.1104/pp.85.3.860>
- [9] F. A. Nasr, H. S. Doma and H. F. Nassar, "Treatment of Domestic Wastewater Using an Anaerobic Baffled Reactor Followed by a Duckweed Pond for Agricultural Purposes," *The Environmentalist*, Vol. 29, No. 3, 2008, pp. 270-279. <http://dx.doi.org/10.1007/s10669-008-9188-y>
- [10] D. Patel and V. Kanungo, "Phytoremediation Potential of Duckweed (Lemnaminor L: A Tiny Aquatic Plant) in the Removal of Pollutants from Domestic Wastewater with Special Reference to Nutrients," *Bioscan*, Vol. 5, No. 3, 2010, pp. 355-358.
- [11] E. Awuah, "Pathogen Removal Mechanisms in Macrophyte and Algal Waste Stabilization Ponds," Taylor & Francis, Leiden, 2006.
- [12] F. A. Al-Nozaily, "Performance and Process Analysis of

- Duckweed-Covered Sewage Lagoons for High Strength Sewage: The Case of Sana'a, Yemen," 2001.
- [13] J. Xu, J. J. Cheng and A.-M. Stomp, "Growing Spirodela polyrrhiza in Swine Wastewater for the Production of Animal Feed and Fuel Ethanol: A Pilot Study," *CLEAN—Soil, Air, Water*, Vol. 40, No. 7, 2012, pp. 760-765. <http://dx.doi.org/10.1002/clen.201100108>
- [14] S. Sengupta, C. Medda and A. Dewanji, "The Impact of Duckweed Growth on Water Quality in Sub-Tropical Ponds," *The Environmentalist*, Vol. 30, No. 4, 2010, pp. 353-360. <http://dx.doi.org/10.1007/s10669-010-9293-6>
- [15] F. H. Papadopoulos and V. A. Tsihrintzis, "Assessment of a Full-Scale Duckweed Pond System for Septage Treatment," *Environmental Technology*, Vol. 32, No. 7, 2011, pp. 795-804. <http://dx.doi.org/10.1080/09593330.2010.514009>
- [16] J. Cheng, et al., "Nutrient Removal from Swine Lagoon Liquid by Lemna Minor 8627," *Transactions of the American Society of Agricultural Engineers*, Vol. 45, No. 4, 2002, pp. 1003-1010.
- [17] R. P. Staves and R. M. Knaus, "Chromium Removal from Water by 3 Species of Duckweeds," *Aquatic Botany*, Vol. 23, No. 3, 1985, pp. 261-273. [http://dx.doi.org/10.1016/0304-3770\(85\)90070-1](http://dx.doi.org/10.1016/0304-3770(85)90070-1)
- [18] C. B. Sekomo, et al., "Heavy Metal Removal in Duckweed and Algae Ponds as a Polishing Step for Textile Wastewater Treatment," *Ecological Engineering*, Vol. 44, 2012, pp. 102-110. <http://dx.doi.org/10.1016/j.ecoleng.2012.03.003>
- [19] A. Sasmaz and E. Obek, "The Accumulation of Arsenic, Uranium, and Boron in Lemna gibba L. Exposed to Secondary Effluents," *Ecological Engineering*, Vol. 35, No. 10, 2009, pp. 1564-1567. <http://dx.doi.org/10.1016/j.ecoleng.2009.06.007>
- [20] P. Skillicorn, W. Spira and W. Journey, "Duckweed Aquaculture: A New Aquatic Farming System for Developing Countries," Banco Mundial, Washington DC, 1993.
- [21] P. van der Steen, A. Brenner and G. Oron, "An Integrated Duckweed and Algae Pond System for Nitrogen Removal and Renovation," *Water science and Technology*, Vol. 38, No. 1, 1998, pp. 335-343. [http://dx.doi.org/10.1016/S0273-1223\(98\)00419-3](http://dx.doi.org/10.1016/S0273-1223(98)00419-3)
- [22] G. Oron, D. Porath and L. R. Wildschut, "Wastewater Treatment and Renovation by Different Duckweed Species," *Journal of Environmental Engineering*, Vol. 112, No. 2, 1986, pp. 247-263. [http://dx.doi.org/10.1061/\(ASCE\)0733-9372\(1986\)112:2\(247\)](http://dx.doi.org/10.1061/(ASCE)0733-9372(1986)112:2(247))
- [23] K. R. Reddy and W. F. Debusk, "Growth-Characteristics of Aquatic Macrophytes Cultured in Nutrient-Enriched Water. 1. Water Hyacinth, Water Lettuce, and Pennywort," *Economic Botany*, Vol. 38, No. 2, 1984, pp. 229-239. <http://dx.doi.org/10.1007/BF02858838>
- [24] C. McLay, "The Effect of pH on the Population Growth of Three Species of Duckweed: Spirodela Oligorrhiza, Lemna Minor and Wolffia Arrhiza," *Freshwater Biology*, Vol. 6, No. 2, 1976, pp. 125-136. <http://dx.doi.org/10.1111/j.1365-2427.1976.tb01596.x>
- [25] R. M. Wedge and J. E. Burris, "Effects of Light and Temperature on Duckweed Photosynthesis," *Aquatic Botany*, Vol. 13, 1982, pp. 133-140. [http://dx.doi.org/10.1016/0304-3770\(82\)90047-X](http://dx.doi.org/10.1016/0304-3770(82)90047-X)
- [26] H. Brix, "Do Macrophytes Play a Role in Constructed Treatment Wetlands?" *Water Science and Technology*, Vol. 35, No. 5, 1997, pp. 11-18. [http://dx.doi.org/10.1016/0304-3770\(82\)90047-X](http://dx.doi.org/10.1016/0304-3770(82)90047-X)
- [27] E. Ashby and T. Oxley, "The Interaction of Factors in the Growth of Lemna VI. An Analysis of the Influence of Light Intensity and Temperature on the Assimilation Rate and the Rate of Frond Multiplication," *Annals of Botany*, Vol. 49, No. 2, 1935, pp. 309-336.
- [28] O. Thomas, "Métrologie des eaux Résiduares," CE-BEDOC, Liège, 1995.
- [29] H. White, "The Interaction of Factors in the Growth of Lemna. IX. Further Observations on the Effect of Light Intensity on Growth and Multiplication," *Annals of Botany*, Vol. 50, No. 4, 1936, pp. 827-848.
- [30] M. L. Boss, M. J. Dijkman and V. B. Theiling, "Aging Studies on Lemna," *Quarterly Journal of the Florida Academy of Sciences*, Vol. 26, No. 2, 1963, p. 175.