

# Northumbria Research Link

Citation: Karampelas, Konstantinos, Van Doorselaere, Tom, Pascoe, David J., Guo, Mingzhe and Antolin, Patrick (2019) Amplitudes and Energy Fluxes of Simulated Decayless Kink Oscillations. *Frontiers in Astronomy and Space Sciences*, 6. p. 38. ISSN 2296-987X

Published by: Frontiers

URL: <https://doi.org/10.3389/fspas.2019.00038>  
<<https://doi.org/10.3389/fspas.2019.00038>>

This version was downloaded from Northumbria Research Link:  
<http://nrl.northumbria.ac.uk/id/eprint/41098/>

Northumbria University has developed Northumbria Research Link (NRL) to enable users to access the University's research output. Copyright © and moral rights for items on NRL are retained by the individual author(s) and/or other copyright owners. Single copies of full items can be reproduced, displayed or performed, and given to third parties in any format or medium for personal research or study, educational, or not-for-profit purposes without prior permission or charge, provided the authors, title and full bibliographic details are given, as well as a hyperlink and/or URL to the original metadata page. The content must not be changed in any way. Full items must not be sold commercially in any format or medium without formal permission of the copyright holder. The full policy is available online: <http://nrl.northumbria.ac.uk/policies.html>

This document may differ from the final, published version of the research and has been made available online in accordance with publisher policies. To read and/or cite from the published version of the research, please visit the publisher's website (a subscription may be required.)



# Amplitudes and Energy Fluxes of Simulated Decayless Kink Oscillations

Konstantinos Karamelas<sup>1\*</sup>, Tom Van Doorselaere<sup>1</sup>, David J. Pascoe<sup>1</sup>, Mingzhe Guo<sup>1,2</sup> and Patrick Antolin<sup>3</sup>

<sup>1</sup> Department of Mathematics, Centre for Mathematical Plasma Astrophysics, KU Leuven, Leuven, Belgium, <sup>2</sup> Institute of Space Sciences, Shandong University, Weihai, China, <sup>3</sup> School of Mathematics and Statistics, University of St. Andrews, St. Andrews, United Kingdom

## OPEN ACCESS

### Edited by:

Xueshang Feng,  
State Key Laboratory of Space  
Weather, National Space Science  
Center (CAS), China

### Reviewed by:

Alina Catalina Donea,  
Monash University, Australia  
Sergey Anfinogentov,  
Institute of Solar-Terrestrial Physics  
(RAS), Russia

### \*Correspondence:

Konstantinos Karamelas  
kostas.karamelas@kuleuven.be

### Specialty section:

This article was submitted to  
Stellar and Solar Physics,  
a section of the journal  
Frontiers in Astronomy and Space  
Sciences

**Received:** 07 March 2019

**Accepted:** 30 April 2019

**Published:** 21 May 2019

### Citation:

Karamelas K, Van Doorselaere T,  
Pascoe DJ, Guo M and Antolin P  
(2019) Amplitudes and Energy Fluxes  
of Simulated Decayless Kink  
Oscillations.  
*Front. Astron. Space Sci.* 6:38.  
doi: 10.3389/fspas.2019.00038

Recent observations with the Atmospheric Imaging Assembly (AIA) instrument on the SDO spacecraft have revealed the existence of decayless coronal kink oscillations. These transverse oscillations are not connected to any external phenomena like flares or coronal mass ejections, and show significantly lower amplitudes than the externally excited decaying oscillations. Numerical studies have managed to reproduce such decayless oscillations in the form of footpoint driven standing waves in coronal loops, and to treat them as a possible mechanism for wave heating of the solar corona. Our aim is to investigate the correlation between the observed amplitudes of the oscillations and input the energy flux from different drivers. We perform 3D MHD simulations in single, straight, density-enhanced coronal flux tubes for different drivers, in the presence of gravity. Synthetic images at different spectral lines are constructed with the use of the FoMo code. The development of the Kelvin-Helmholtz instability leads to mixing of plasma between the flux tube and the hot corona. Once the KHI is fully developed, the amplitudes of the decayless oscillations show only a weak correlation with the driver strength. We find that low amplitude decayless kink oscillations may correspond to significant energy fluxes of the order of the radiative losses for the Quiet Sun. A clear correlation between the input energy flux and the observed amplitudes from our synthetic imaging data cannot be established. Stronger drivers lead to higher values of the line width estimated energy fluxes. Finally, estimations of the energy fluxes by spectroscopic data are affected by the LOS angle, favoring combined analysis of imaging and spectroscopic data for single oscillating loops.

**Keywords:** solar corona, forward modeling, magnetohydrodynamics, corona loops, decayless oscillations

## 1. INTRODUCTION

Over the past 20 years, observations of the Sun have shown the existence of waves and oscillations throughout the solar corona (Aschwanden, 2006; De Moortel and Nakariakov, 2012). The discovery of transverse magnetohydrodynamic (MHD) standing (Aschwanden et al., 1999; Nakariakov et al., 1999) waves in coronal loops, and propagating waves in open magnetic field structures (Verwichte et al., 2005) has led to many observational and numerical studies. The ubiquity of such waves has

also been established in prominence threads (Okamoto et al., 2007), coronal loops (McIntosh et al., 2011), as well as greater areas of the corona (Tomczyk et al., 2007; Tomczyk and McIntosh, 2009; Thurgood et al., 2014; Morton et al., 2016), renewing the interest on the effects of these waves in the solar atmosphere.

Analytical studies on the nature of the transverse oscillations in inhomogeneous plasmas (Zajtsev and Stepanov, 1975; Ryutov and Ryutova, 1976; Edwin and Roberts, 1983; Allcock and Erdélyi, 2017) have described the different surface waves expected in a non-uniform plasma. In order to explain the observed damping of such oscillations (Tomczyk and McIntosh, 2009; Terradas et al., 2010; Verth et al., 2010; Pascoe et al., 2016a, 2017; Pascoe et al., 2019), extensive theoretical and numerical work has also been performed. The mechanisms of resonant absorption and mode coupling (Sakurai et al., 1991; Goossens et al., 1992, 2011; Ruderman and Roberts, 2002; Arregui et al., 2005; Pascoe et al., 2012, 2016b, 2018; De Moortel et al., 2016; Yu et al., 2017) are considered the reason behind this spatial and temporal attenuation of the oscillations, by transferring the energy of the global kink mode to local azimuthal Alfvén modes. Through phase mixing (Heyvaerts and Priest, 1983; Soler and Terradas, 2015), the energy is then transferred to ever decreasing smaller scales until it gets dissipated by resistivity and viscosity (Ofman et al., 1994a,b, 1998; Poedts and Boynton, 1996). Observational studies of waves in the solar chromosphere and corona (De Pontieu et al., 2007; Tomczyk and McIntosh, 2009; Morton et al., 2012) suggest the existence of enough energy flux to sustain the radiative losses of  $\sim 100 \text{ W m}^{-2}$  for the non-active region corona (Withbroe and Noyes, 1977). In De Moortel and Pascoe (2012) it was shown that LOS integration of footpoint driven multistrand coronal loop oscillations leads to an underestimation of the wave energy. In Antolin et al. (2017) it was found for a non-driven oscillating loop that the wave energy ends up underestimated through the localization of the energy by resonant absorption. Recent simulations of coronal loop waves (Pagano and De Moortel, 2017, 2019; Pagano et al., 2018) have not reported sufficient heating to balance the radiative losses.

Alongside the high amplitude, externally initiated, decaying transverse oscillations in coronal loops (Verwichte et al., 2009, 2010; White and Verwichte, 2012; White et al., 2012) a new group of small-amplitude decayless transverse oscillations have been identified in coronal loops (Nisticò et al., 2013; Anfinogentov et al., 2015; Duckenfield et al., 2018), with amplitudes  $\sim 0.1$ – $0.4 \text{ Mm}$ . These decayless oscillations have been interpreted in different ways over the years. They have been treated as continuously driven kink waves with a footpoint driver (Afanasyev et al., 2019; Guo et al., 2019; Karampelas et al., 2019), as a self-oscillatory process due to the interaction of the loops with quasi-steady flows (Nakariakov et al., 2016), or as a line of sight (LOS) effect from the development of the Kelvin-Helmholtz instability (KHI) (Antolin et al., 2016) in impulsive standing loop oscillations.

The development of the KH instability has been theorized in plasma structures where standing surface waves are observed (Heyvaerts and Priest, 1983; Browning and Priest, 1984; Zaqarashvili et al., 2015; Barbulescu et al., 2019; Hillier et al.,

2019), caused by the strong shear velocities generated by the azimuthal Alfvén waves. Recent numerical studies (Terradas et al., 2008, 2018; Antolin et al., 2014; Antolin et al., 2018; Magyar and Van Doorselaere, 2016; Howson et al., 2017; Karampelas et al., 2017) have confirmed the development of transverse wave induced Kelvin-Helmholtz (TWIKH) rolls for standing kink waves. Additional work has been performed in order to develop methods of identifying the effects of KHI in oscillating loops (Goddard et al., 2018; Van Doorselaere et al., 2018). Spatially extended TWIKH rolls have been found in the case of continuously driven standing waves, which fully deform the initial monolithic loop cross-section into a fully turbulent one (Karampelas and Van Doorselaere, 2018; Karampelas et al., 2019). These spatially extended TWIKH rolls in simulations of continuously driven loops have also been reported as sites of mixing of plasma and heating in the solar corona, by effectively spreading the effects of phase mixing across the cross-section of loops (Afanasyev et al., 2019; Karampelas et al., 2017, 2019; Guo et al., 2019).

One of the main challenges in creating an efficient wave heating model is to find a way of providing a high enough energy flux over large periods of time, while still remaining within the constraints imposed by the observational data. The decayless oscillations seem to be ideal candidates for prolonged energy input in such a model, and also pose the constraint of having relatively small oscillation amplitudes. In Guo et al. (2019), the use of a mixed Alfvén and transverse footpoint driver suggested as a way of increasing the total energy input while retaining small amplitudes in the synthetic images. The authors in Afanasyev et al. (2019) suggest the use of broadband drivers as a way to include additional energy for a decreased observational impact, while still maintaining sufficient energy input. In the current work, we study the effects of transverse footpoint drivers of different strengths on the observational signatures of the induced oscillations in synthetic images. The aim is to detect the existence of a correlation between the input energy flux and the oscillation amplitudes and to determine the observed fluxes from synthetic spectroscopic and imaging data, and set possible constraints for future work.

## 2. MATERIALS AND METHODS

### 2.1. Basic Setup

For our 3D simulations, we use straight, density-enhanced magnetic flux tubes in a low- $\beta$  coronal environment, following Karampelas et al. (2019). This setup models gravitationally stratified, active region coronal loops in ideal MHD, in the presence of numerical resistivity. Each loop has a full length ( $L$ ) of  $200 \text{ Mm}$  and an initial minor radius ( $R$ ) of  $1 \text{ Mm}$ , which is constant with height. The radial density profile of our cylindrical flux tubes at the footpoint is

$$\rho(x, y) = \rho_e + (\rho_i - \rho_e) \frac{1}{2} (1 - \tanh(\sqrt{x^2 + y^2/R - 1} b)). \quad (1)$$

We denote the basic values of our physical parameters with the index  $i$  ( $e$ ) for internal (external) values, with respect to our tube. The external and internal density at the footpoint are equal to

$\rho_e = 10^9 \mu m_p \text{ cm}^{-3} = 0.836 \times 10^{-12} \text{ kg m}^{-3}$  ( $\mu = 0.5$  and  $m_p$  is the proton mass) and  $\rho_i = 3 \times \rho_e$ . We denote the coordinates in the plane perpendicular to the loop axis by  $x$  and  $y$ , and by  $z$  the coordinate along its axis.  $b = 20$  sets the width of the boundary layer to  $\ell \sim 0.3R$ . For the models studied, we set the temperature to be constant with height and equal to  $T_e = 3 \times T_i = 2.7 \text{ MK}$ . Finally, we consider an initial uniform magnetic field parallel to the flux tube axis (along the  $z$ -axis) equal to  $B_z = 22.8 \text{ G}$ . This gives us a plasma  $\beta = 0.018$ .

Gravity varies sinusoidally along the flux tube, corresponding to a semi-circular loop with major radius  $L\pi^{-1}$ , and takes a zero value at the loop apex ( $z = 0$ ) and a maximum absolute value at the footpoints ( $z = \pm 100 \text{ Mm}$ ). Due to the hydrostatic equilibrium we have stratification of pressure and temperature along the loop. To counteract the initial pressure imbalance at the loop boundary caused by the gravitational stratification, the magnetic field is restructuring inside the flux tube, once we let the system reach a semi-equilibrium state after one period. By the end of the relaxation period, neither of temperature, pressure, nor density deviate significantly from their initial state, as in Karampelas et al. (2019). The radial profiles of density and temperature at several positions along the  $z$ -axis are shown in Figure 1.

## 2.2. Boundary Conditions and Driver

Our tubes are driven from the footpoint ( $z = 100 \text{ Mm}$ ), using a continuous, monoperiodic “dipole-like” driver (Karampelas et al., 2017), inspired by that used by Pascoe et al. (2010). The period of the driver is  $P \simeq 2L/c_k$ , coinciding with the corresponding fundamental eigenfrequency for our gravitationally stratified flux tube (Edwin and Roberts, 1983; Andries et al., 2005). For a kink speed of  $c_k = 1,167 \text{ km s}^{-1}$  we obtain a period of  $P = 171 \text{ s}$ . The driver at the bottom boundary

has a uniform and time varying velocity inside the loop,

$$\{v_x, v_y\} = \{v(t), 0\} = \left\{v_0 \cos\left(\frac{2\pi t}{P}\right), 0\right\}, \quad (2)$$

where  $v_0$  (in  $\text{km s}^{-1}$ ) is the peak velocity amplitude. Outside the loop, the velocity follows the relation

$$\{v_x, v_y\} = v(t)R^2 \left\{ \frac{(x - \alpha(t))^2 - y^2}{((x - \alpha(t))^2 + y^2)^2}, \frac{2(x - \alpha(t))y}{((x - \alpha(t))^2 + y^2)^2} \right\}, \quad (3)$$

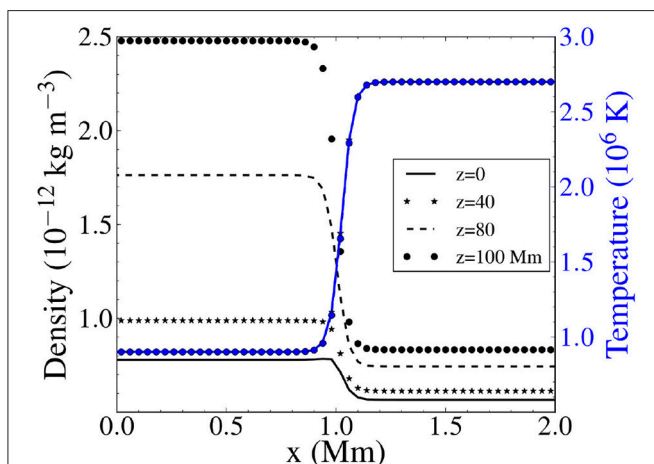
where  $\alpha(t) = v_0 (0.5 P/\pi) \sin(2\pi t/P)$  is a function that recentres the driver, tracking the footpoint. A transition region following the density profile exists between the two areas, in order to avoid any numerical instabilities due to jumps in the velocity.

We study five different models (“D1,” “D2,” “D4,” “D6,” and “D8”), each for a different corresponding value of  $v_0 = 1, 2, 4, 6$ , and  $8 \text{ km s}^{-1}$ .

At the bottom boundary, we also keep the velocity component parallel to the  $z$ -axis ( $v_z$ ) antisymmetric ( $z = 100 \text{ Mm}$ ) and we extrapolate the values for density and pressure, using the equations for hydrostatic equilibrium. A zero normal gradient condition is used to extrapolate the values of each magnetic field component through the bottom boundary. Studying the fundamental standing kink mode for an oscillating flux tube allows us to take advantage of the inherent symmetries of this mode, as well as the symmetric nature of our driver. In the top boundary at  $z = 0$ , the location of the loop apex, we kept  $v_z$ ,  $B_x$ , and  $B_y$  antisymmetric in the  $x$ – $y$  plane at the apex. The rest of the quantities on that boundary are defined as symmetric. Thus, only half the loop is simulated along the loop axis. All side boundaries are set to outflow (Neumann-type, zero-gradient) conditions for all variables.

## 2.3. Numerical Method and Grid

The 3D ideal MHD problem is solved using the PLUTO code (Mignone et al., 2018), with the extended GLM method from Dedner et al. (2002) keeping the solenoidal constraint on the magnetic field. We use the finite volume piecewise parabolic method (PPM) and the characteristic tracing method for the timestep. The domain dimensions are  $(x, y, z) = (16, 6, 100) \text{ Mm}$  for models D1, D2, and D4, and  $(x, y, z) = (16, 10, 100) \text{ Mm}$  for models D6 and D8. The latter was chosen in order to properly resolve the expanded turbulent loop cross-section from the stronger drivers. We have cell dimensions of  $40 \times 40 \times 1562.5 \text{ km}$  for all models. The resolution is higher in the  $x$ – $y$  plane, to better resolve the small-scale structures that appear in the loop cross section. The density scale height of our setup is  $28 \text{ Mm}$ , and is close to the value of the loop major radius  $L\pi^{-1} \sim 64 \text{ Mm}$ . Alongside the lack of radiation or thermal conduction, this allows for a coarser resolution on the  $z$ -axis, that can still sufficiently model the density stratification along the flux tube. In all of our models, we also have the inevitable numerical dissipation effects, which lead to values of effective resistivity and viscosity many orders of magnitude larger than the expected ones in the solar corona.



**FIGURE 1 |** Radial profile of the initial density (with black) and temperature (with blue) for our gravitationally stratified, cylindrical flux tubes at different heights, right before the introduction of the driver. The apex is located at  $z = 0$  and the footpoint at  $z = 100 \text{ Mm}$ .  $x = 0$  is the center of the loop at  $t = 0$ .



## 2.4. Forward Modeling

We use the FoMo code (Van Doorselaere et al., 2016) to create synthetic images and compare to real observations. We focus on the use of the Fe XII 193 Å emission line, with maximum formation temperature of  $\log T = 6.19$ , in order to create spectroscopic data of our flux tubes. The 193 Å line tracks the warmer flux tube boundary layer (Antolin et al., 2016, 2017) and is better suited for our studies of driven oscillations with turbulent cross-sections (Karampelas et al., 2019). The same analysis has been performed for the Fe IX 171 Å line. This line has a maximum formation temperature of  $\log T = 5.93$ , and is more sensitive to the colder plasma from the loop interior. We also use the ‘Imaging’ functionality of ‘fomo-c’ from FoMo, in order to create emission images for the corresponding AIA channels.

We create time-distance maps of the loop apex for each model, by placing a slit at LOS angles equal to  $0^\circ$  (perpendicular to the axis of the oscillation, or  $x$  axis),  $45^\circ$  and  $90^\circ$  (parallel to the axis of the oscillation). To better compare to the observations of decayless coronal loop oscillations, we degrade the original spatial resolution of the AIA synthetic images to that of SDO/AIA ( $0''.6$ ). Then we resample the data to match the pixel size of the target instrument. A similar process is used for the spectroscopic data, where we try to mimic Hinode/EIS by taking a plate-scale of  $1''$  and a Gaussian PSF of  $3''$  FWHM (Antolin et al., 2017; Guo et al., 2019), while also adding poisson distributed photon noise. For the spectroscopic data we also reduce the initial spectral resolution from 3 to  $36 \text{ km s}^{-1}$  for the degraded spectrum. The temporal resolution is kept at  $\sim 11 \text{ s}$ , which is very close to both that of AIA and EIS instruments.

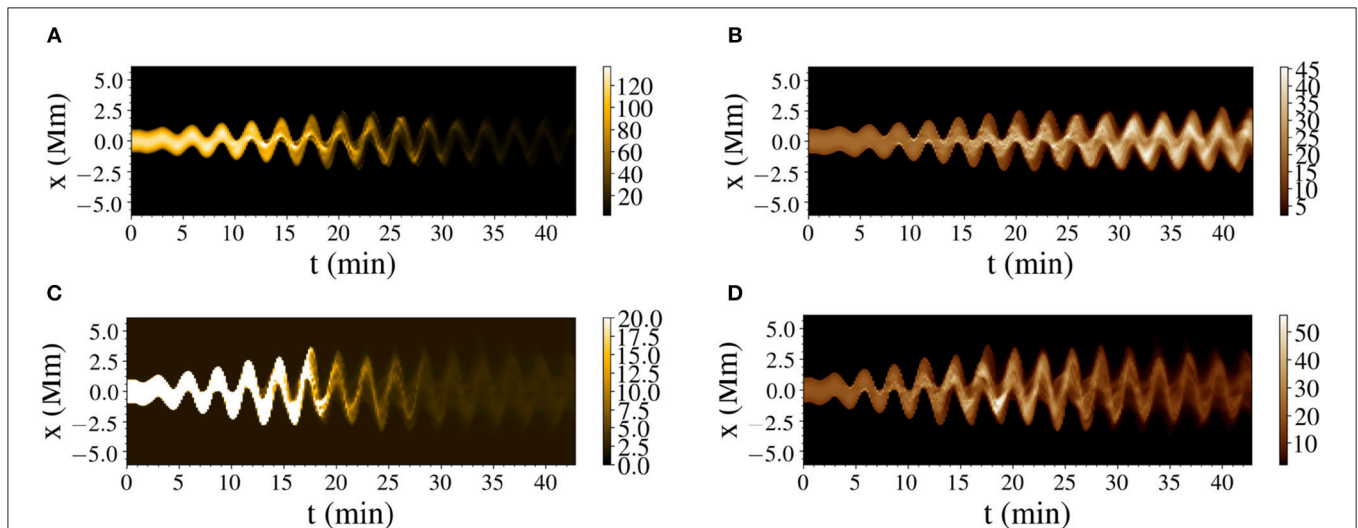
## 3. RESULTS

We drive our loops for fifteen cycles. As in Karampelas et al. (2017), the first waves to reach the apex ( $z = 0$ ) are the azimuthal

Alfvén waves at the boundary layer of our tube, thanks to their higher propagation speed, followed by the propagating kink waves. Because of the symmetry at the apex, the driver induced waves lead to the initiation of a standing oscillation resembling the fundamental kink mode for gravitationally stratified loops (Andries et al., 2005; Magyar et al., 2015; Karampelas et al., 2019).

Once the standing mode is initiated, we have the gradual development of the KH instability and the expansion of the flux tube cross-section (Karampelas et al., 2017). By performing forward modeling for our setups, we construct time distance maps of our oscillations at the apex, for the different spectral lines. Two examples of these forward modeling time-distance maps are presented in Figure 2. There we see the apex displacement over time for the D2 and D4 model in the 171 and 193 Å AIA channels. As expected for loops with turbulent cross-sections (Karampelas et al., 2019), the development of the KH instability and the spatially extended TWIKH rolls lead to extensive mixing of the loop with the surrounding plasma. For our setup of a cold loop embedded in a warmer corona, this leads to a big emission drop in the Fe IX 171 Å line.

By saturating the image of the 171 Å emission line for model D4, we can see that this drop occurs faster for stronger drivers. A smaller drop is also observed in the 193 Å line, for stronger drivers, and is caused by the drop of the average density of the emitting plasma, and its mixing with the surrounding plasma (Karampelas et al., 2017), due to the spatially extended TWIKH rolls. In coronal observations we expect to mostly see the cooling stage of loops (Viall and Klimchuk, 2012). The loops observed performing these decayless observations are expected to be driven for long periods of time, while cooling from higher initial temperatures. Hence, the observed decayless regime should correspond to the later stages of our simulations, where we observe the mixing induced emission drop.



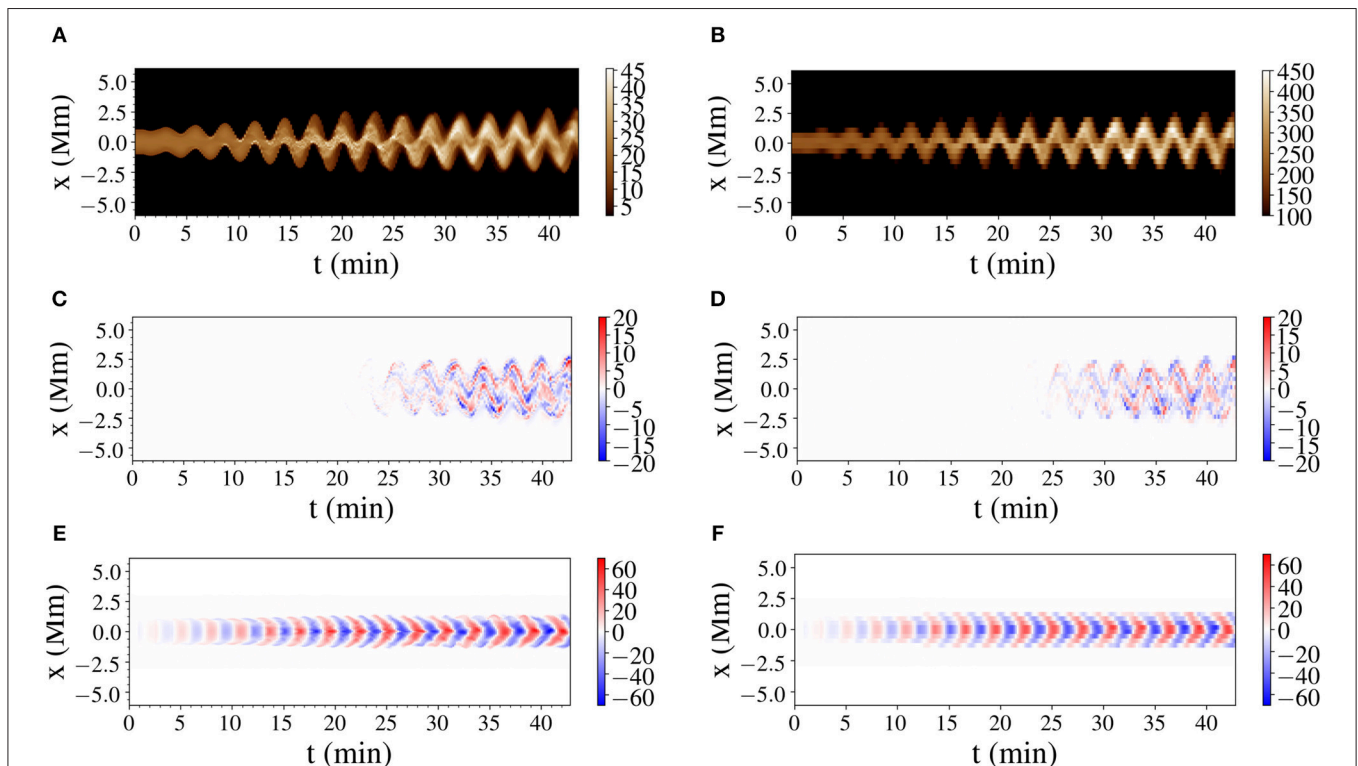
**FIGURE 2 |** Synthetic time-distance maps for the D2 model in the Fe IX 171 Å (A) and Fe XII 193 Å (B) and for the D4 model in the Fe IX 171 Å (C) and Fe XII 193 Å (D) lines at the apex. The time distance maps show the emission (in  $\text{ergs cm}^{-2} \text{s}^{-1} \text{sr}^{-1}$ ) for the numerical resolution panels of our model. For the D4 model, the intensity in the 171 Å line is saturated, in order to clearly depict the drop in the emission. The LOS angle is  $0^\circ$ .

In **Figure 3** we present additional synthetic images for the D2 model, both at numerical and instrument resolution. In that figure, we see the 193 Å AIA channel for the emission intensity at 0° LOS angle, as well as the Doppler velocities for the Fe XII 193 Å line at 0 and 90° angles. We observe the development of emission peaks prior to the development of the TWIKH rolls, due to the excitation of higher order harmonics and the deformation of the flux tube from the combined effect of the inertia and fluting modes (Andries et al., 2005; Ruderman et al., 2010; Yuan and Van Doorselaere, 2016; Antolin et al., 2017; Terradas et al., 2018). Once the KHI develops, we see the emergence of stronger emission peaks in the 193 Å channel, stronger Doppler velocities perpendicular to the direction of the oscillation, and the gradual expansion of the resonant flows across the loop cross-section (Antolin et al., 2015; Karampelas and Van Doorselaere, 2018). The latter is evident in the bottom panels of **Figure 3**, where we look at the loop from the side. These out of phase movements from the TWIKH rolls are present in all of our models and get more intense and spatially extended the stronger each driver is.

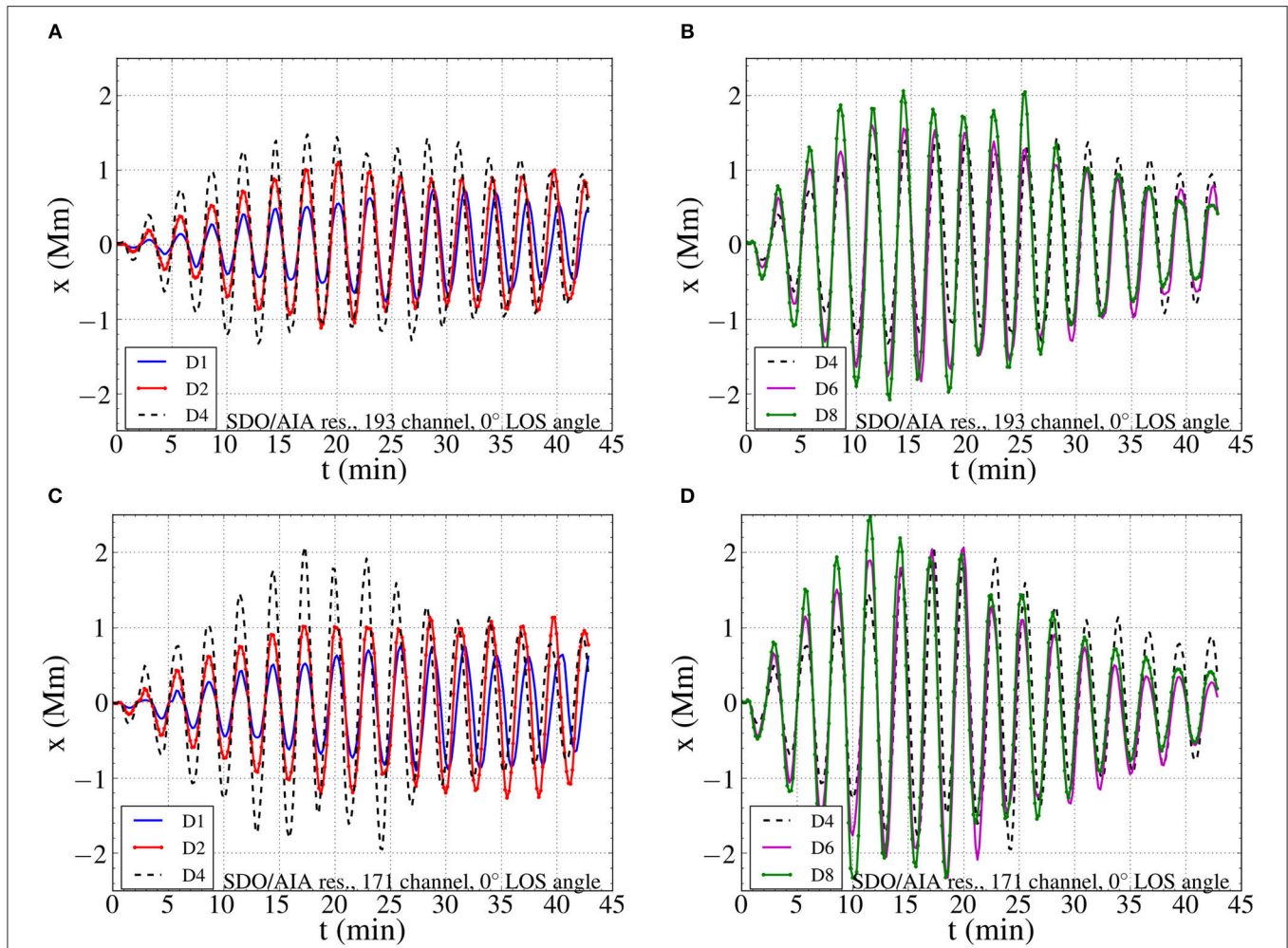
We track the oscillations in the constructed time-distance maps for our models by setting a threshold value off  $I_{thr} = I_{min} + 0.1(I_{max} - I_{min})$ , where  $I$  is the intensity across the loop on each frame,  $I_{max}$  is its maximum value and  $I_{min}$  is the background intensity. The point with this intensity is

defined as the ‘edge’ of the loop. A spline interpolation for the position is used to inhibit tracking errors, with the number of interpolation points being half the number of frames in the TD map. We present the displacement of the apex for each loop in **Figure 4**, where panels for all the models are shown at a 0° LOS angle. An initial increase of the amplitude is followed by saturation and an eventual drop in the second half of the simulations. This is the stage of the simulations where the decayless regime should correspond to. In the last stages, we see that the D2 and D4 models show similar values of displacement, while the D6 and D8 models show lower amplitudes than the former ones.

We see that similar profiles are obtained for both emission lines used in the present work. The synthetic images in the 171 Å line show higher initial amplitudes than those in the 193 Å line. This is because the loop core has the highest transverse velocities before the development of the KH instability. The loop boundary layer has radially decreasing  $v_x$  velocities, as result of the driver shape that we use at the footpoint, leading to smaller displacements than the loop core, as seen in the two emission lines, each being more sensitive to the corresponding loop region. A similar thing was observed in Antolin et al. (2016). In that work, the loop core showed a higher oscillation amplitude than the loop boundary layer, before the initiation of the KHI. In our models, the constant driving leads to overall



**FIGURE 3** | Forward modeling results for the D2 model in the Fe XII 193 Å line at the apex. The left panels show the images for numerical resolution and the right panels the images for the targeted instruments. **(A,B)** Show the emission intensity (in  $\text{ergs cm}^{-2}\text{s}^{-1}\text{sr}^{-1}$ ) for numerical and for AIA resolution respectively. **(C,D)** Show the Doppler velocity (in  $\text{km s}^{-1}$ ) at 0°, for numerical and for EIS resolution respectively. **(E,F)** Doppler velocity (in  $\text{km s}^{-1}$ ) at 90°, for numerical and for EIS resolution, respectively.



**FIGURE 4 |** Time distance maps of the oscillation amplitude for the five models. The apex displacements were obtained by tracking the loop edge in synthetic emission images of the Fe XII 193 Å line for (A,B) and of the Fe IX 171 Å line for (C,D), at  $0^\circ$ .

stronger displacements, while the deformation of the loop cross-section leads to higher amplitudes in the 193 Å line for the given temperature distribution.

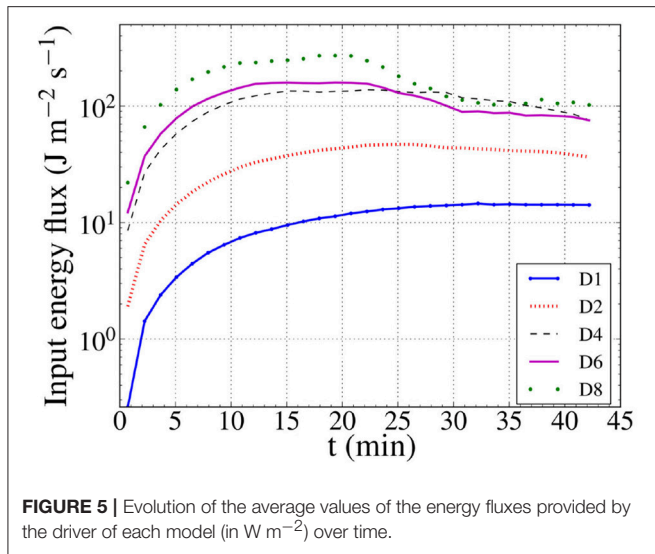
In **Figure 4** we get a small phase difference between the D1 model and all the rest. This small change in the phase between the observed displacement and the driving frequency is a LOS effect and caused by the integration of the emission across TWIKH rolls with varying phases. A similar phase shift was observed for the turbulent layer of oscillating loops performing in Antolin et al. (2016). For the D1 model, the slower development of the KHI leads to a delay in the manifestation of that phase difference. Similar trends have been observed for synthetic images at  $45^\circ$ , with the difference that the obtained displacements are smaller due to the projection of the oscillation plane on the plane of sky (POS).

In order to determine whether the obtained amplitude drop in **Figure 4** is caused purely by the development of strong azimuthal resonant flows and the KH eddies, we plot in **Figure 5** the input energy flux ( $\text{J m}^{-2} \text{s}^{-1}$ ) for each driver. The Poynting

fluxes are calculated for a surface area of  $3 \times 3 \text{ Mm}^2$  in the centre of the bottom boundary. This square contains the loop footpoint of each model, and provides 80% of the total energy input from the spatially localized driver. The curves in **Figure 5** represent the time evolution of the average values of the fluxes.

We can see that the efficiency of the drivers change over time, with the strongest changes happening for the stronger drivers. These variations with time are the result of the boundary conditions employed here. The zero normal gradient condition for the magnetic field allowed it to freely evolve with time, instead of fixing its value at the footpoint. This is affecting the Poynting flux from the driver in the bottom boundary, causing the evolution of the energy input, similarly to Guo et al. (2019) and Karampelas et al. (2019). In the scope of this study, we do not focus on creating a realistic model for a driver, but we focus on the effects of the driver strength on the synthetic data. Therefore, tracking the evolution of the driver efficiency is sufficient within the context of the current study. The initial increase in the energy





flux is followed by a drop, which is again more pronounced in the models with the stronger drivers. By comparing the curves for the models D2 and D4 with the synthetic images of **Figure 2**, we see place that this drop takes place when the loops become turbulent due to the KHI.

Focusing at the last 6 cycles of the the simulation in **Figure 5**, we see that D4 shows a stronger input than D6, while still remaining weaker than D8. D2 on the other hand remains weaker from all the aforementioned ones, providing almost half or less as much input flux. This is in contrast to the results of **Figure 4**, where the oscillation amplitude of the D2 model was comparable to that of the D4 model, and higher than the respective amplitudes of models D6 and D8. This shows that the previously obtained amplitudes are affected by the development of the out of phase movements of the spatially extended TWIKH rolls. All the drivers provide fluxes within the range of the radiative losses of the non-active region corona (Withbroe and Noyes, 1977), with the exception of D1, which is significantly weaker than the rest.

After calculating the input energy flux and the observed loop displacements, we plot amplitude-flux diagrams in **Figure 6**. For these diagrams, we took the average of the (absolute values) of the maximum displacements and fluxes, for each model, at time intervals 19.95 – 28.5, 28.5 – 34.2, and 34.2 – 42.75 min. The diagrams contain the amplitudes traced from AIA-resolution synthetic images of 171 and 193 Å channels at both 0 and 45° LOS angle. Taking this and the results from **Figure 4** into account, we explain the differences between the 171 and 193 Å AIA channels as LOS effects of our models. The highest values of the amplitudes are obtained for the highest driver input fluxes. However, a clear correlation is absent for fluxes  $\leq 10 \text{ W m}^{-2}$ . Instead, we see a relatively uniform distribution of amplitudes among the different fluxes in that region. The corresponding amplitudes are below 1 Mm as we look perpendicular to the oscillation direction (0°). At a LOS angle of 45°, the value of these amplitudes is between 0.15 and 0.55 Mm, placing them within the

range of the observed decayless oscillations (Nisticò et al., 2013; Anfinogentov et al., 2015).

Finally, we want to calculate the observed kinetic energy flux ( $\text{W m}^{-2}$ ) across the line of sight, for a specific spectral line. Based on the work of Antolin et al. (2017), we calculate the Doppler energy flux as:

$$F_{obs} = \frac{1}{2} \int_{\perp LOS} < \rho_{\lambda}(l, t) > v_{Dop, \lambda}(l, t)^2 \frac{c_k}{L_{\perp LOS}} dl_{\perp}, \quad (4)$$

and the non-thermal energy flux as:

$$F_{obs} = \frac{1}{2} \int_{\perp LOS} < \rho_{\lambda}(l, t) > (\xi_{\lambda}(l, t)^2 - \xi_{\lambda, th}(l, t)^2) \frac{c_k}{L_{\perp LOS}} dl_{\perp}. \quad (5)$$

With  $c_k = 1.67 \text{ km s}^{-1}$  we denote the kink speed.  $L_{\perp LOS}$  is the length of the domain across the LOS,  $v_{Dop, \lambda}$  the Doppler velocity (in  $\text{km s}^{-1}$ ) for the spectral line,  $\xi_{\lambda}$  the corresponding Doppler width in  $\text{km s}^{-1}$ , and the thermal width (in  $\text{km s}^{-1}$ ):

$$\xi_{\lambda, th} = \frac{c}{\lambda_0} \sqrt{\frac{T_{\lambda} k_B}{\mu m_p}}. \quad (6)$$

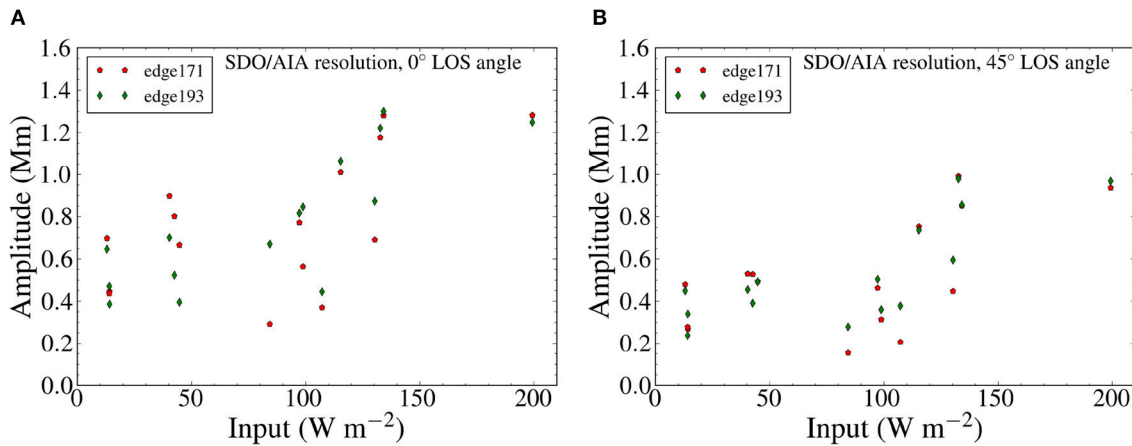
With  $c$  we denote the speed of light,  $\lambda_0$  the wavelength at rest for the spectral line,  $k_B$  the Boltzmann constant,  $m_p$  the proton mass and with  $\mu$  the atomic weight in proton masses of the emitting element. The emitting temperature  $T_{\lambda}$  is taken as an approximation from the  $\xi_{\lambda, th}$  in the beginning of the simulations, where the velocities along the LOS are practically zero. The quantity  $< \rho_{\lambda}(l, t) >$  is based on the emissivity-weighted average density from Antolin et al. (2017):

$$< \rho_{\lambda}(l, t) > = \frac{\int_{// LOS} \rho \epsilon(l, t) ds}{\left( \int_{// LOS} \epsilon(l, t) ds \right) |_{max}}, \quad (7)$$

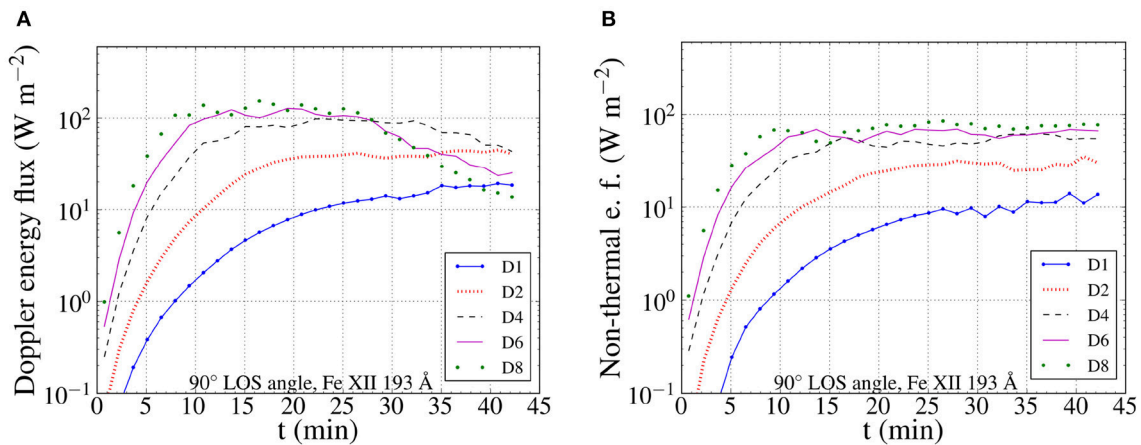
where we instead divide the integral of density times emissivity with the maximum value of the integrated emissivity along the LOS at each frame. The fluxes from all setups are then normalized to the domain dimensions of models D6 and D8 for all setups, to make direct comparisons possible between the different models.

We plot our results for the Fe XII 193 Å spectral line in **Figure 7**, following Hinode/EIS spatial, spectral and temporal resolution. For a LOS angle of 90°, we observe an initial increase in the energy flux estimated by the Doppler velocities, which persisted for the duration of the simulations for models D1 and D2. For the models D4, D6, and D8 we observe a drop in the estimated Doppler energy flux, in the last cycles of the simulations. This drop appears once the turbulent loop cross-section shows very strong out of phase flows, due to the TWIKH rolls. These azimuthal flows do not register in the Doppler velocities at this angle, leading to the aforementioned drop. A similar behavior was observed in Antolin et al. (2017) for a non-driven transverse oscillation. We also see a correlation with the drop of the input energy flux, as observed for the the models D4, D6, and D8. However, a similar correlation is not observed for the D1 and D2 models. This shows that the observed drop in the





**FIGURE 6** | Diagrams of the average oscillation amplitudes as a function of the average energy input for each model. In **(A)** we have a  $0^\circ$  LOS angle and in **(B)** we have a  $45^\circ$  LOS angle. Data from the Fe XII 193 Å line and the Fe IX 171 Å line were used. The loops displacements for the two lines were obtained by tracking their edge in the corresponding synthetic emission images.



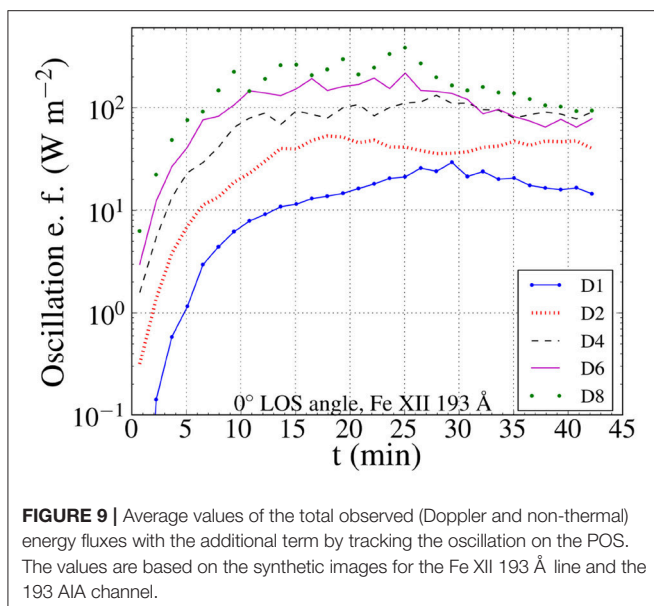
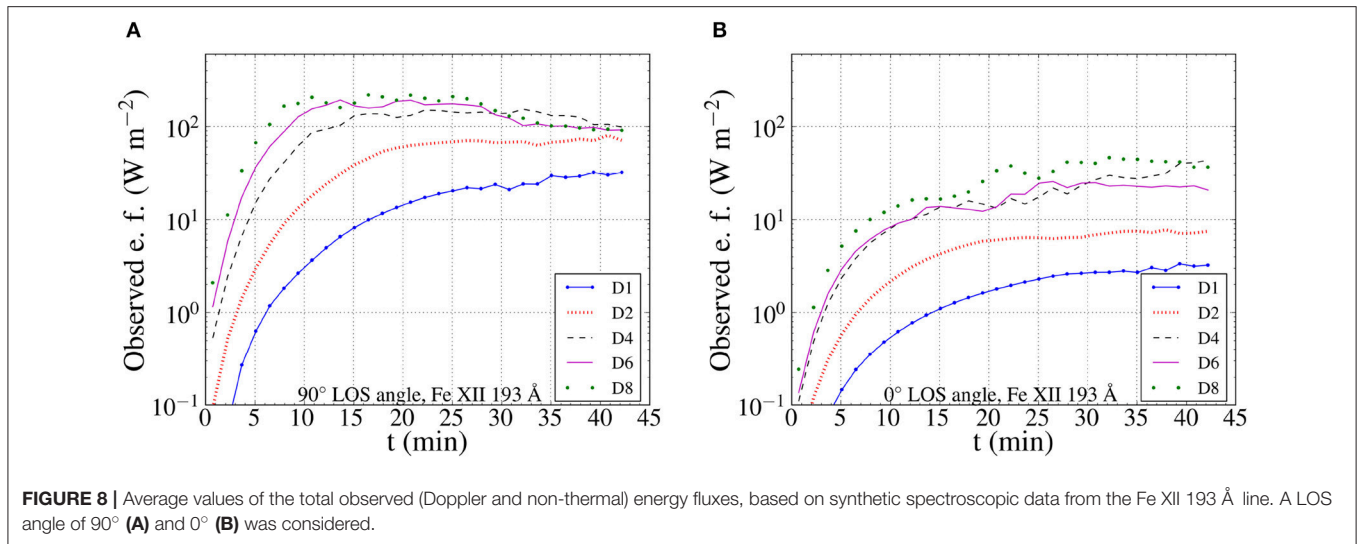
**FIGURE 7** | Average values of the Doppler **(A)** and non-thermal **(B)** energy fluxes for a LOS angle of  $90^\circ$ , based on synthetic spectroscopic data from the Fe XII 193 Å line.

Doppler energy flux is the combined result of the input drop and the loop deformation by the TWIKH rolls.

The diagram of the non-thermal energy flux in **Figure 7** shows a saturation once the KHI fully deforms the loop cross-section. This agrees with the results of Antolin et al. (2017), where a similar saturated domain was obtained after the manifestation of the KHI. For the models D4, D6, and D8, this saturation takes place before the drop in the Doppler energy flux. The small increase of the non-thermal energy flux observed in the later parts of the simulation, does not fully compensate for the drop in the Doppler energy flux. This shows that the aforementioned Doppler flux follows closely the input energy flux, in the case of continuously driven oscillating loops. We also observe that the non-thermal energy fluxes are increasing for stronger drivers. This suggests that the observed correlation between line widths and Doppler shifts reported by McIntosh and De Pontieu (2012) can correspond to a continuous input of transverse MHD waves,

supporting their hypothesis. However, the use of a single loop for each driver excludes the LOS effects of integrating over many structures, and cannot give a safe statistical result to be compared with the observations (McIntosh and De Pontieu, 2012).

We see a disagreement between the total observed (Doppler + non-thermal) energy flux, for a LOS angle of  $90^\circ$ , and the input in **Figure 5** for models D1 and D2. The former, as seen in **Figure 8** is overestimated with respect to the input energy flux during the later part of the respective simulations. This comes in contrast with the results of Antolin et al. (2017), where the estimated total energy flux was lower than the available energy flux calculated directly from the simulation data. This disagreement is due to the inaccuracies introduced through the method of estimating the density and temperature of the emitting plasma from the synthetic data. The latter appears in the correction for the thermal terms in the non-thermal energy fluxes. Additional uncertainty can be caused by the angle of



observation. As seen in **Figure 8**, the total observed energy for a LOS angle of 0° follows the development of the TWIKH rolls and leads to an underestimation of the energy flux.

The uncertainty revolving around the LOS angle can be bypassed by a combined approach of multiple observations. Once a small angle of observation is identified by combining the energy diagrams and the spectra, like those in **Figure 4**, we can then approximate the total energy fluxes. We achieve this by adding an additional term to the sum of the Doppler and non-thermal energy fluxes. This additional term is derived from Equation (4), by replacing the Doppler velocities with the velocity derived from the displacement of the oscillating loop, like in the time-distance maps of **Figure 4**. The results of these calculation are presented in **Figure 9**, and show a better agreement with the input energy than the underestimated fluxes in **Figure 8B**.

## 4. DISCUSSION

In the present work we aimed to study the effects of different transverse drivers in the dynamics and energetics of decayless oscillations in coronal loops, through the use of synthetic images. We modeled the decayless oscillations as the standing waves from continuously footpoint-driven straight flux tubes, in the presence of gravity. We performed MHD simulations for footpoint drivers of different strengths and performed forward modeling to our data, constructing time-distance maps at the loop apex. We then degraded the spatial and spectral resolution of our signal, targeting different instruments, namely the SDO/AIA and Hinode/EIS. From the created acquired synthetic images for the 193 and the 171 Å lines we studied the oscillation amplitudes in the plane of sky (POS) at the apex, generated by the five different drivers. To do so, we tracked the “edge” of the loop from the emission images, which is defined by threshold value for the intensity, set slightly higher than the background intensity.

In **Figure 2** we observe the drop of the emission in synthetic images for both lines employed here. This drop is the result of the spatially extended TWIKH rolls, expanding the loop cross-section and causing mixing with the surrounding plasma. This drop in the emission is stronger and occurs faster for stronger drivers, as we can see in the example of **Figure 2** for the D2 and D4 models. In observations we mostly expect to observe loops during their cooling stage (Viall and Klimchuk, 2012), starting from unknown higher temperatures of formation. For decayless oscillations, we therefore expect them to be already in a turbulent state, because of the continuous driving. Any change in the strength of the driver could then lead to sudden changes in the observed emission in various lines, depending on the temperature gradient between the loop and the surrounding plasma, as well as the temperature of said coronal plasma.

In **Figure 4** we see that the final values of the amplitudes are comparable between the different drivers. We are mostly interested in the second half of the simulations, during which the KHI has deformed the cross-section of each loop. This is

because we expect the loops performing decayless oscillations to be already in a turbulent state. During that phase, we can observe higher oscillation amplitudes from weaker drivers. This becomes obvious by comparing these time distance maps and the input energy flux diagrams of **Figure 5** for the D4 and D8 models. The D4 model showed bigger displacements toward the end of the simulations than D8 model, despite having a less efficient driver at that stage of the simulations. In addition to that, the D2 model showed very similar amplitudes to the D4, D6, and D8 models, despite providing less than half the energy flux of these drivers. This result is a clear indication of the importance of the out of phase flows, developed by the TWIKH rolls, in the characteristics of the observed oscillations.

Following the results of **Figure 7**, we observe a drop in the Doppler energy flux for the models D4, D6, and D8. This drop is primarily related to the respective drop of the input energy flux, and secondarily to the development of the TWIKH rolls, since the drop in the input energy flux of models D1 and D2 does not followed by a drop in their Doppler flux. This is related to the less deformed loop cross-sections expected for weaker drivers in continuously driven oscillations of coronal loops (Karampelas and Van Doorsselaere, 2018). The connection between the Doppler energy flux and the resonant flows has also been established in Antolin et al. (2017), for a small-amplitude non-driven transverse oscillation of coronal loop.

From the diagram of the non-thermal energy flux over time in **Figure 7**, we observe the saturation of the energy flux, attributed to the turbulent motions present across the loop cross-section. We also observe a positive correlation between the average values of the saturated non-thermal energy fluxes and the driver efficiency from **Figure 5**. This suggests that a continuous input of transverse MHD waves could lead to the observed correlation between line widths and Doppler shifts reported by McIntosh and De Pontieu (2012). However, the small number of measurements (one observation per loop per driver) does not allow us to acquire safe statistical results. Furthermore, our study has excluded the LOS effects of integrating over many structures, which prevents us from making a direct comparison with the observations (McIntosh and De Pontieu, 2012).

By taking into account the results of **Figure 9**, we see that the sum of the non-thermal and Doppler energy flux can lead to different values, depending on the angle of observation and the methods used in the calculations. By adding an additional term, derived by estimating the oscillation velocity from the time-distance maps, we can compensate for the effects of the observation angle when calculating the energy fluxes.

We need to stress here that the observed saturation in the amplitudes is not caused by numerical dissipation, but is instead the combined result of the strong out of phase flows generated by the TWIKH rolls and the effects of plasma mixing in the emission. Scaling tests with setups of higher resolution, as well as past results (Guo et al., 2019; Karampelas et al., 2019) have revealed a similar saturation in the oscillation amplitudes. In Karampelas et al. (2019), we have seen that the input energy from our drivers turns into kinetic energy (strong out of phase flows), magnetic energy and internal energy of the plasma (wave

heating). The derived spectra in that study reveal a turbulent profile, represented by the inertial range. This inertial range is connected to the existence of smaller scales and is present as long as the KHI is not suppressed by the very large dissipation parameters. The development of these smaller scales could be observed in the Doppler velocities and non-thermal line-widths from spectroscopic observations. These observations, however, would be dependent upon the angle of observation, the instrumental resolution, as well as the assumptions used for the initial temperature and density profile.

Finally, from **Figure 9** we conclude that we cannot obtain a clear correlation between the driver input and the observed oscillation amplitudes just from the synthetic imaging data. In our setups, the amplitudes between 0.15 and 0.55 Mm were evenly distributed over a wide range of input fluxes, up to  $110 \text{ W m}^{-2}$ . Small amplitude oscillations can potentially be hiding enough energy to sustain the non-active region corona ( $\sim 100 \text{ W m}^{-2}$ ) (Withbroe and Noyes, 1977). The development of spatially extended TWIKH rolls can mask its observational signatures, by causing out of phase movements of the loop plasma and affecting the emission at various lines. This is relevant when explaining the observed decayless oscillations (Nisticò et al., 2013; Anfinogentov et al., 2015) as the result of continuous footpoint driving of a coronal loop, and stresses the need for combined instrument observations.

To summarize our results, the mixing of plasma caused by the developed KHI affects the emission in synthetic images, leading to a drop once the loop cross-section becomes turbulent. The developed TWIKH rolls show strong out of phase flows, which lead to the saturation of the oscillation amplitudes for each model. For different angles, we obtain oscillation amplitudes near the observed ones, which do not show a clear correlation with the input energy from the driver. These observed amplitudes can potentially carry enough energy to sustain the radiative losses from the Quiet Sun. A better correlation can be obtained between the input energy and the spectroscopic results from the Doppler energy flux and the non-thermal energy fluxes. All of our results, however, are dependent upon the angle of observations and the approximations used, hinting toward the need for combined spectroscopic and imaging observations.

Apart from our suggestion that small-amplitude decayless oscillations contain enough energy flux to support the QS, there are other ways to introduce additional energy within the context of such observed waves. In De Moortel and Pascoe (2012), it was shown that the wave energy is significantly underestimated by integration of multiple loops along the LOS. In that work, the kinetic energy estimated by the LOS Doppler velocities was  $\sim 5 - 20\%$  of the energy in the domain. A combination of a kink and Alfvén driver (Guo et al., 2019) can also provide more energy into the system, while retaining a similar profile in AIA synthetic images. Alternatively, the use of a broadband driver could also increase the driver efficiency, for only small deviations from the expected oscillation amplitudes. The detection of such higher harmonics in decayless oscillations by Duckenfield et al. (2018) suggests that the latter method should be studied further in future works.

## DATA AVAILABILITY

The datasets generated for this study are available on request to the corresponding author.

## AUTHOR CONTRIBUTIONS

KK has performed numerical simulations and forward modeling for the models in this project, and set the basic ideas for the analysis of the results. DP has performed specialized data extraction and analysis of the synthetic images. TVD has set the basic guidelines for this project, consulted during the analysis, and supervised the completion of the project. MG and PA have contributed on the methods of the analysis and have given feedback during the discussion of the results. KK has written the first draft of the current paper, received input from all co-authors, and written the final version of the manuscript.

## FUNDING

KK, TVD, and DP and were funded by GOA-2015-014 (KU Leuven). MG is supported by the China Scholarship Council (CSC) and the National Natural Science Foundation of China (41674172). PA acknowledges funding from his STFC Ernest Rutherford Fellowship (No. ST/R004285/1). This project has received funding from the European Research Council (ERC) under the European Union's Horizon 2020 research and innovation programme (grant agreement No 724326).

## ACKNOWLEDGMENTS

The computational resources and services used in this work were provided by the VSC (Flemish Supercomputer Center), funded by the Research Foundation Flanders (FWO) and the Flemish Government—department EWI. The results were inspired by discussions at the ISSI-Bern and at ISSI-Beijing meetings.

## REFERENCES

- Afanasyev, A., Karampelas, K., and Van Doorselaere, T. (2019). Coronal loop transverse oscillations excited by different driver frequencies. *Astrophys. J.* 876:100. doi: 10.3847/1538-4357/ab1848
- Allcock, M., and Erdélyi, R. (2017). Magnetohydrodynamic waves in an asymmetric magnetic slab. *Solar Phys.* 292:35. doi: 10.1007/s11207-017-1054-y
- Andries, J., Goossens, M., Hollweg, J. V., Arregui, I., and Van Doorselaere, T. (2005). Coronal loop oscillations. Calculation of resonantly damped MHD quasi-mode kink oscillations of longitudinally stratified loops. *Astron. Astrophys.* 430, 1109–1118. doi: 10.1051/0004-6361/20041832
- Anfinogentov, S. A., Nakariakov, V. M., and Nisticò, G. (2015). Decayless low-amplitude kink oscillations: a common phenomenon in the solar corona? *Astron. Astrophys.* 583:A136. doi: 10.1051/0004-6361/201526195
- Antolin, P., De Moortel, I., Van Doorselaere, T., and Yokoyama, T. (2016). Modeling observed decay-less oscillations as resonantly enhanced Kelvin-Helmholtz vortices from transverse MHD waves and their seismological application. *Astrophys. J. Lett.* 830:L22. doi: 10.3847/2041-8205/830/2/L22
- Antolin, P., De Moortel, I., Van Doorselaere, T., and Yokoyama, T. (2017). Observational signatures of transverse magnetohydrodynamic waves and associated dynamic instabilities in coronal flux tubes. *Astrophys. J.* 836:219. doi: 10.3847/1538-4357/aa5eb2
- Antolin, P., Okamoto, T. J., De Pontieu, B., Uitenbroek, H., Van Doorselaere, T., and Yokoyama, T. (2015). Resonant absorption of transverse oscillations and associated heating in a solar prominence. II. Numerical aspects. *Astrophys. J.* 809:72. doi: 10.1088/0004-637X/809/1/72
- Antolin, P., Schmit, D., Pereira, T. M. D., De Pontieu, B., and De Moortel, I. (2018). Transverse wave induced Kelvin-Helmholtz rolls in spicules. *Astrophys. J.* 856:44. doi: 10.3847/1538-4357/aab34f
- Antolin, P., Yokoyama, T., and Van Doorselaere, T. (2014). Fine strand-like structure in the solar corona from magnetohydrodynamic transverse oscillations. *Astrophys. J. Lett.* 787:L22. doi: 10.1088/2041-8205/787/2/L22
- Arregui, I., Van Doorselaere, T., Andries, J., Goossens, M., and Kimpe, D. (2005). Resonantly damped fast MHD kink modes in longitudinally stratified tubes with thick non-uniform transitional layers. *Astron. Astrophys.* 441, 361–370. doi: 10.1051/0004-6361/20053039
- Aschwanden, M. J. (2006). Coronal magnetohydrodynamic waves and oscillations: observations and quests. *Philos. Trans. R. Soc. Lond. Ser. A* 364, 417–432. doi: 10.1098/rsta.2005.1707
- Aschwanden, M. J., Fletcher, L., Schrijver, C. J., and Alexander, D. (1999). Coronal loop oscillations observed with the transition region and coronal explorer. *Astrophys. J.* 520, 880–894. doi: 10.1086/307502
- Barbulescu, M., Ruderman, M. S., Van Doorselaere, T., and Erdélyi, R. (2019). An analytical model of the Kelvin-Helmholtz instability of transverse coronal loop oscillations. *Astrophys. J.* 870:108. doi: 10.3847/1538-4357/aaf506
- Browning, P. K., and Priest, E. R. (1984). Kelvin-Helmholtz instability of a phased-mixed Alfvén wave. *Astron. Astrophys.* 131, 283–290.
- De Moortel, I., and Nakariakov, V. M. (2012). Magnetohydrodynamic waves and coronal seismology: an overview of recent results. *Philos. Trans. R. Soc. Lond. Ser. A* 370, 3193–3216. doi: 10.1098/rsta.2011.0640
- De Moortel, I., and Pascoe, D. J. (2012). The effects of line-of-sight integration on multistrand coronal loop oscillations. *Astrophys. J.* 746:31. doi: 10.1088/0004-637X/746/1/31
- De Moortel, I., Pascoe, D. J., Wright, A. N., and Hood, A. W. (2016). Transverse, propagating velocity perturbations in solar coronal loops. *Plasma Phys. Contr. Fusion* 58:014001. doi: 10.1088/0741-3335/58/1/014001
- De Pontieu, B., McIntosh, S. W., Carlsson, M., Hansteen, V. H., Tarbell, T. D., Schrijver, C. J., et al. (2007). Chromospheric alfvénic waves strong enough to power the solar wind. *Science* 318:1574. doi: 10.1126/science.1151747
- Dedner, A., Kemm, F., Kröner, D., Munz, C.-D., Schnitzer, T., and Wengenberg, M. (2002). Hyperbolic divergence cleaning for the MHD equations. *J. Comput. Phys.* 175, 645–673. doi: 10.1006/jcph.2001.6961
- Duckenfield, T., Anfinogentov, S. A., Pascoe, D. J., and Nakariakov, V. M. (2018). Detection of the second harmonic of decay-less kink oscillations in the solar corona. *Astrophys. J. Lett.* 854:L5. doi: 10.3847/2041-8213/aaaab
- Edwin, P. M., and Roberts, B. (1983). Wave propagation in a magnetic cylinder. *Solar Phys.* 88, 179–191. doi: 10.1007/BF00196186
- Goddard, C. R., Antolin, P., and Pascoe, D. J. (2018). Evolution of the transverse density structure of oscillating coronal loops inferred by forward modeling of EUV intensity. *Astrophys. J.* 863:167. doi: 10.3847/1538-4357/aad3cc
- Goossens, M., Erdélyi, R., and Ruderman, M. S. (2011). Resonant MHD waves in the solar atmosphere. *Space Sci. Rev.* 158, 289–338. doi: 10.1007/s11214-010-9702-7
- Goossens, M., Hollweg, J. V., and Sakurai, T. (1992). Resonant behaviour of MHD waves on magnetic flux tubes. III - Effect of equilibrium flow. *Solar Phys.* 138, 233–255. doi: 10.1007/BF00151914
- Guo, M., Van Doorselaere, T., Karampelas, K., Li, B., Antolin, P., and De Moortel, I. (2019). Heating effects from driven transverse and Alfvén waves in coronal loops. *Astrophys. J.* 870:55. doi: 10.3847/1538-4357/aaf1d0
- Heyvaerts, J., and Priest, E. R. (1983). Coronal heating by phase-mixed shear Alfvén waves. *Astron. Astrophys.* 117, 220–234.



- Hillier, A., Barker, A., Arregui, I., and Latter, H. (2019). On Kelvin-Helmholtz and parametric instabilities driven by coronal waves. *Mon. Not. R. Astron. Soc.* 482, 1143–1153. doi: 10.1093/mnras/sty2742
- Howson, T. A., De Moortel, I., and Antolin, P. (2017). Energetics of the Kelvin-Helmholtz instability induced by transverse waves in twisted coronal loops. *Astron. Astrophys.* 607:A77. doi: 10.1051/0004-6361/201731178
- Karampelas, K., and Van Doorselaere, T. (2018). Simulations of fully deformed oscillating flux tubes. *Astron. Astrophys.* 610:L9. doi: 10.1051/0004-6361/201731646
- Karampelas, K., Van Doorselaere, T., and Antolin, P. (2017). Heating by transverse waves in simulated coronal loops. *Astron. Astrophys.* 604:A130. doi: 10.1051/0004-6361/201730598
- Karampelas, K., Van Doorselaere, T., and Guo, M. (2019). Wave heating in gravitationally stratified coronal loops in the presence of resistivity and viscosity. *Astron. Astrophys.* 623:A53. doi: 10.1051/0004-6361/201834309
- Magyar, N., and Van Doorselaere, T. (2016). Damping of nonlinear standing kink oscillations: a numerical study. *Astron. Astrophys.* 595:A81. doi: 10.1051/0004-6361/201629010
- Magyar, N., Van Doorselaere, T., and Marcu, A. (2015). Numerical simulations of transverse oscillations in radiatively cooling coronal loops. *Astron. Astrophys.* 582:A117. doi: 10.1051/0004-6361/201526287
- McIntosh, S. W., and De Pontieu, B. (2012). Estimating the “dark” energy content of the solar corona. *Astrophys. J.* 761:138. doi: 10.1088/0004-637X/761/2/138
- McIntosh, S. W., de Pontieu, B., Carlsson, M., Hansteen, V., Boerner, P., and Goossens, M. (2011). Alfvénic waves with sufficient energy to power the quiet solar corona and fast solar wind. *Nature* 475, 477–480. doi: 10.1038/nature10235
- Mignone, A., Bodo, G., Vaidya, B., and Mattia, G. (2018). A particle module for the PLUTO code. I. An implementation of the MHD–PIC equations. *Astrophys. J.* 859:13. doi: 10.3847/1538-4357/aabccd
- Morton, R. J., Tomczyk, S., and Pinto, R. F. (2016). A global view of velocity fluctuations in the corona below 1.3 R with CoMP. *Astrophys. J.* 828:89. doi: 10.3847/0004-637X/828/2/89
- Morton, R. J., Verth, G., Jess, D. B., Kuridze, D., Ruderman, M. S., Mathioudakis, M., et al. (2012). Observations of ubiquitous compressive waves in the Sun’s chromosphere. *Nat. Commun.* 3:1315. doi: 10.1038/ncomms2324
- Nakariakov, V. M., Anfinogentov, S. A., Nisticò, G., and Lee, D.-H. (2016). Undamped transverse oscillations of coronal loops as a self-oscillatory process. *Astron. Astrophys.* 591:L5. doi: 10.1051/0004-6361/201628850
- Nakariakov, V. M., Ofman, L., Deluca, E. E., Roberts, B., and Davila, J. M. (1999). TRACE observation of damped coronal loop oscillations: implications for coronal heating. *Science* 285, 862–864. doi: 10.1126/science.285.5429.862
- Nisticò, G., Nakariakov, V. M., and Verwichte, E. (2013). Decaying and decayless transverse oscillations of a coronal loop. *Astron. Astrophys.* 552:A57. doi: 10.1051/0004-6361/201220676
- Ofman, L., Davila, J. M., and Steinolfson, R. S. (1994a). “Coronal heating by the resonant absorption of Alfvén waves,” in *IAU Colloq. 144: Solar Coronal Structures*, eds V. Rusin, P. Heinzel, J. C. Vial, 473–477. doi: 10.1017/S0252921100026725
- Ofman, L., Davila, J. M., and Steinolfson, R. S. (1994b). Coronal heating by the resonant absorption of Alfvén waves: the effect of viscous stress tensor. *Astrophys. J.* 421, 360–371. doi: 10.1086/173654
- Ofman, L., Klimchuk, J. A., and Davila, J. M. (1998). A self-consistent model for the resonant heating of coronal loops: the effects of coupling with the chromosphere. *Astrophys. J.* 493, 474–479. doi: 10.1086/305109
- Okamoto, T. J., Tsuneta, S., Berger, T. E., Ichimoto, K., Katsukawa, Y., Lites, B. W., et al. (2007). Coronal transverse magnetohydrodynamic waves in a solar prominence. *Science* 318:1577. doi: 10.1126/science.1145447
- Pagano, P., and De Moortel, I. (2017). Contribution of mode-coupling and phase-mixing of Alfvén waves to coronal heating. *Astron. Astrophys.* 601:A107. doi: 10.1051/0004-6361/201630059
- Pagano, P., and De Moortel, I. (2019). Contribution of observed multi frequency spectrum of Alfvén waves to coronal heating. *arXiv e-prints*. doi: 10.1051/0004-6361/201834158
- Pagano, P., Pascoe, D. J., and De Moortel, I. (2018). Contribution of phase-mixing of Alfvén waves to coronal heating in multi-harmonic loop oscillations. *Astron. Astrophys.* 616:A125. doi: 10.1051/0004-6361/201732251
- Pascoe, D. J., Anfinogentov, S. A., Goddard, C. R., and Nakariakov, V. M. (2018). Spatiotemporal analysis of coronal loops using seismology of damped kink oscillations and forward modeling of EUV intensity profiles. *Astrophys. J.* 860:31. doi: 10.3847/1538-4357/aac2bc
- Pascoe, D. J., Goddard, C. R., and Nakariakov, V. M. (2016a). Spatially resolved observation of the fundamental and second harmonic standing kink modes using SDO/AIA. *Astron. Astrophys.* 593:A53. doi: 10.1051/0004-6361/201628784
- Pascoe, D. J., Goddard, C. R., Nisticò, G., Anfinogentov, S., and Nakariakov, V. M. (2016b). Coronal loop seismology using damping of standing kink oscillations by mode coupling. *Astron. Astrophys.* 589:A136. doi: 10.1051/0004-6361/201628255
- Pascoe, D. J., Hood, A. W., de Moortel, I., and Wright, A. N. (2012). Spatial damping of propagating kink waves due to mode coupling. *Astron. Astrophys.* 539:A37. doi: 10.1051/0004-6361/201117979
- Pascoe, D. J., Hood, A. W., and Van Doorselaere, T. (2019). Coronal loop seismology using standing kink oscillations with a lookup table. *Front. Astron. Space Sci.* 6:22. doi: 10.3389/fspas.2019.00022
- Pascoe, D. J., Russell, A. J. B., Anfinogentov, S. A., Simões, P. J. A., Goddard, C. R., Nakariakov, V. M., et al. (2017). Seismology of contracting and expanding coronal loops using damping of kink oscillations by mode coupling. *Astron. Astrophys.* 607:A8. doi: 10.1051/0004-6361/201730915
- Pascoe, D. J., Wright, A. N., and De Moortel, I. (2010). Coupled Alfvén and kink oscillations in coronal loops. *Astrophys. J.* 711, 990–996. doi: 10.1088/0004-637X/711/2/990
- Poedts, S., and Boynton, G. C. (1996). Nonlinear magnetohydrodynamics of footpoint-driven coronal loops. *Astron. Astrophys.* 306:610.
- Ruderman, M., and Roberts, B. (2002). The damping of coronal loop oscillations. *Astrophys. J.* 577:475. doi: 10.1086/342130
- Ruderman, M. S., Goossens, M., and Andries, J. (2010). Nonlinear propagating kink waves in thin magnetic tubes. *Phys. Plasmas* 17:082108. doi: 10.1063/1.3464464
- Ryutov, D. A., and Ryutova, M. P. (1976). Sound oscillations in a plasma with “magnetic filaments”. *Sov. J. Exp. Theor. Phys.* 43:491.
- Sakurai, T., Goossens, M., and Hollweg, J. V. (1991). Resonant behaviour of MHD waves on magnetic flux tubes. I - Connection formulae at the resonant surfaces. *Solar Wind* 133, 227–245.
- Soler, R., and Terradas, J. (2015). Magnetohydrodynamic kink waves in nonuniform solar flux tubes: phase mixing and energy cascade to small scales. *Astrophys. J.* 803:43. doi: 10.1088/0004-637X/803/1/43
- Terradas, J., Andries, J., Goossens, M., Arregui, I., Oliver, R., and Ballester, J. L. (2008). Nonlinear instability of kink oscillations due to shear motions. *Astrophys. J. Lett.* 687:L115. doi: 10.1086/593203
- Terradas, J., Goossens, M., and Verth, G. (2010). Selective spatial damping of propagating kink waves due to resonant absorption. *Astron. Astrophys.* 524:A23. doi: 10.1051/0004-6361/201014845
- Terradas, J., Magyar, N., and Van Doorselaere, T. (2018). Effect of magnetic twist on nonlinear transverse kink oscillations of line-tied magnetic flux tubes. *Astrophys. J.* 853:35. doi: 10.3847/1538-4357/aa9d0f
- Thurgood, J. O., Morton, R. J., and McLaughlin, J. A. (2014). First direct measurements of transverse waves in solar polar plumes using SDO/AIA. *Astrophys. J. Lett.* 790:L2. doi: 10.1088/2041-8205/790/1/L2
- Tomczyk, S., and McIntosh, S. W. (2009). Time-distance seismology of the solar corona with CoMP. *Astrophys. J.* 697, 1384–1391. doi: 10.1088/0004-637X/697/2/1384
- Tomczyk, S., McIntosh, S. W., Keil, S. L., Judge, P. G., Schad, T., Seeley, D. H., et al. (2007). Alfvén waves in the solar corona. *Science* 317:1192. doi: 10.1126/science.1143304
- Van Doorselaere, T., Antolin, P., and Karampelas, K. (2018). Broadening of the differential emission measure by multi-shelled and turbulent loops. *Astron. Astrophys.* 620:A65. doi: 10.1051/0004-6361/201834086
- Van Doorselaere, T., Antolin, P., Yuan, D., Reznikova, V., and Magyar, N. (2016). Forward modeling of EUV and gyrosynchrotron emission from coronal plasmas with fomo. *Front. Astron. Space Sci.* 3:4. doi: 10.3389/fspas.2016.00004
- Verth, G., Terradas, J., and Goossens, M. (2010). Observational evidence of resonantly damped propagating kink waves in the solar corona. *Astrophys. J. Lett.* 718, L102–L105. doi: 10.1088/2041-8205/718/2/L102

- Verwichte, E., Aschwanden, M. J., Van Doorselaere, T., Foullon, C., and Nakariakov, V. M. (2009). Seismology of a large solar coronal loop from EUVI/STEREO observations of its transverse oscillation. *Astrophys. J.* 698, 397–404. doi: 10.1088/0004-637X/698/1/397
- Verwichte, E., Foullon, C., and Van Doorselaere, T. (2010). Spatial seismology of a large coronal loop arcade from TRACE and EIT observations of its transverse oscillations. *Astrophys. J.* 717, 458–467. doi: 10.1088/0004-637X/717/1/458
- Verwichte, E., Nakariakov, V. M., and Cooper, F. C. (2005). Transverse waves in a post-flare supra-arcade. *Astron. Astrophys.* 430, L65–L68. doi: 10.1051/0004-6361:200400133
- Viall, N. M., and Klimchuk, J. A. (2012). Evidence for widespread cooling in an active region observed with the SDO atmospheric imaging assembly. *Astrophys. J.* 753:35. doi: 10.1088/0004-637X/753/1/35
- White, R. S., and Verwichte, E. (2012). Transverse coronal loop oscillations seen in unprecedented detail by AIA/SDO. *Astron. Astrophys.* 537:A49. doi: 10.1051/0004-6361/201118093
- White, R. S., Verwichte, E., and Foullon, C. (2012). First observation of a transverse vertical oscillation during the formation of a hot post-flare loop. *Astron. Astrophys.* 545:A129. doi: 10.1051/0004-6361/201219856
- Withbroe, G. L., and Noyes, R. W. (1977). Mass and energy flow in the solar chromosphere and corona. *Annu. Rev. Astron. Astrophys.* 15, 363–387. doi: 10.1146/annurev.aa.15.090177.002051
- Yu, D. J., Van Doorselaere, T., and Goossens, M. (2017). Resonant absorption of surface sausage and surface kink modes under photospheric conditions. *Astrophys. J.* 850:44. doi: 10.3847/1538-4357/aa9223
- Yuan, D., and Van Doorselaere, T. (2016). Forward modeling of standing kink modes in coronal loops. I. Synthetic views. *Astrophys. J.* 223:23. doi: 10.3847/0067-0049/223/2/23
- Zajtsev, V. V., and Stepanov, A. V. (1975). On the origin of pulsations of type IV solar radio emission. Plasma cylinder oscillations (I). *Issledovaniia Geomagnet. Aeron. Fizike Solntsa* 37, 3–10.
- Zaqarashvili, T. V., Zhelyazkov, I., and Ofman, L. (2015). Stability of rotating magnetized jets in the solar atmosphere. I. Kelvin-Helmholtz instability. *Astrophys. J.* 813:123. doi: 10.1088/0004-637X/813/2/123

**Conflict of Interest Statement:** The authors declare that the research was conducted in the absence of any commercial or financial relationships that could be construed as a potential conflict of interest.

Copyright © 2019 Karampelas, Van Doorselaere, Pascoe, Guo and Antolin. This is an open-access article distributed under the terms of the Creative Commons Attribution License (CC BY). The use, distribution or reproduction in other forums is permitted, provided the original author(s) and the copyright owner(s) are credited and that the original publication in this journal is cited, in accordance with accepted academic practice. No use, distribution or reproduction is permitted which does not comply with these terms.