

Northumbria Research Link

Citation: Georges, Karla, Ezeokoli, Chuckwudozi, Sparagano, Olivier, Pargass, Indira, Campbell, Mervyn, D'Abadie, Roger and Yabsley, Michael (2011) A case of transplacental transmission of Theileria equi in a foal in Trinidad. Veterinary Parasitology, 175 (3-4). pp. 363-366. ISSN 0304-4017

Published by: Elsevier

URL: <http://dx.doi.org/10.1016/j.vetpar.2010.10.019> <<http://dx.doi.org/10.1016/j.vetpar.2010.10.019>>

This version was downloaded from Northumbria Research Link: <http://nrl.northumbria.ac.uk/3767/>

Northumbria University has developed Northumbria Research Link (NRL) to enable users to access the University's research output. Copyright © and moral rights for items on NRL are retained by the individual author(s) and/or other copyright owners. Single copies of full items can be reproduced, displayed or performed, and given to third parties in any format or medium for personal research or study, educational, or not-for-profit purposes without prior permission or charge, provided the authors, title and full bibliographic details are given, as well as a hyperlink and/or URL to the original metadata page. The content must not be changed in any way. Full items must not be sold commercially in any format or medium without formal permission of the copyright holder. The full policy is available online: <http://nrl.northumbria.ac.uk/policies.html>

This document may differ from the final, published version of the research and has been made available online in accordance with publisher policies. To read and/or cite from the published version of the research, please visit the publisher's website (a subscription may be required.)



Northumbria
University
NEWCASTLE



UniversityLibrary

Northumbria Research Link

This paper was originally published by Elsevier, 2011. Further details are available on the publisher's Website:

<http://www.elsevier.com>

The original publication can be accessed, with permissions, from the following link:

<http://dx.doi.org/110.1016/j.vetpar.2010.10.019>

1 A case of transplacental transmission of *Theileria equi* in a foal in Trinidad

2

3 Karla C. Georges ^{a*}, Chuckwudozi D. Ezeokoli ^b, Olivier Sparagano ^c, Indira Pargass^a,

4 Mervyn Campbell^a, Roger D'Abadie ^a and Michael J. Yabsley ^d

5 ^aSchool of Veterinary Medicine, Faculty of Medical Sciences, The University of the West

6 Indies. St. Augustine Campus. EWMSC, Mt. Hope, Trinidad and Tobago, West Indies

7 ^bCollege of Veterinary Medicine, University of Agriculture, Private Mail Bag 2373,

8 Makurdi, Nigeria

9 ^c School of Applied Sciences, Northumbria University NE1 8ST, UK

10 ^d Warnell School of Forestry and Natural Resources and the Southeastern Cooperative

11 Wildlife Disease Study, Department of Population Health, College of Veterinary

12 Medicine, University of Georgia, Athens GA 30602, United States

13 * Corresponding Author

14 Telephone: +1 868 645 2640 ext 4341

15 Fax: +1 868 645 7428

16 Email address: karla.georges@sta.uwi.edu

17 Abstract

18 Equine piroplasmosis due to *T. equi* and *B. caballi* is endemic in Trinidad. A case
19 of equine piroplasmosis due to *T. equi* was diagnosed in a Thoroughbred foal at 10 hrs
20 post-partum. A high parasitaemia (63 %) of piroplasms was observed in a Wright-
21 Giemsa® stained thin blood smear from the foal. In addition, the 18S rRNA gene for
22 *Babesia/Theileria* was amplified from DNA extracted from the blood of the foal and the
23 mare. Amplified products were subjected to a reverse line blot hybridization assay
24 (RLB), which confirmed the presence of *T. equi* DNA in the foal. The mare was negative
25 by RLB but was positive for *T. equi* using a nested PCR and sequence analysis.

26 In areas where equine piroplasmosis is endemic, severe jaundice in a post-partum
27 foal may be easily misdiagnosed as neonatal isoerythrolysis. Foals with post-partum
28 jaundice should be screened for equine piroplasmosis, which may be confirmed using
29 molecular methods if available.

30 Key words: Neonatal foals, equine piroplasmosis, reverse line blot, Trinidad

31 Introduction

32 Equine piroplasmosis is a tick-transmitted haemoparasitic disease of equids
33 caused by the protozoa *Theileria equi* or *Babesia caballi*. Ixodid tick vectors of the
34 genera *Rhipicephalus*, *Hyalomma* and *Dermacentor* are known to transmit the disease (de
35 Waal, 1992). Both parasites are distributed world wide, however several countries restrict
36 the importation of horses that are serologically positive for the disease (Magnarelli et al.,
37 2000) . The clinical signs of equine piroplasmosis are often variable and non-specific.
38 Acute infection results in fever (40°C), depression, reduced appetite, pallor, icterus,
39 dyspnoea, petechiation, sweating, colic, eyelid and distal limb oedema and incoordination
40 (Zobba et al., 2008). Massive destruction of erythrocytes results in haemoglobinuria.
41 Chronic infection tends to result in variable clinical signs (de Waal, 1992).

42 Equine piroplasmosis can also be transmitted iatrogenically via the common use
43 of blood contaminated syringes and needles and this route is thought to be responsible for
44 the 2008 outbreak of the disease in several horses in Florida (Florida Department of
45 Agriculture and Consumer Services Division of Animal Husbandry, 2009).
46 Transplacental transmission of *T. equi* has been reported and although suspected,
47 evidence of *B. caballi* infection via vertical transmission *in utero* is lacking (Allsopp et
48 al., 2007). Infection of foals by *T. equi in utero* can result in abortions, full term still
49 births or the birth of live foals with neonatal piroplasmosis (Allsopp et al., 2007; Phipps
50 and Otter, 2004). Equine piroplasmosis due to *B. caballi* and *T. equi* has been reported in
51 adult horses in Trinidad using molecular (Rampersad et al., 2003) and serological
52 (Asgarali et al., 2007) techniques. This is the first report of a case of transplacental
53 transmission of *T. equi* in Trinidad.

54 Case description:

55 Diplomacy, a 12-year old thoroughbred mare had a normal pregnancy and
56 parturition. The foal was born weak and severely icteric (Figure 1) with blood tinged
57 urine. Blood from the foal was collected into an EDTA tube for routine haematological
58 analysis at 10 hrs postpartum. A thin blood smear was stained with Wright-Giemsa ® and
59 examined under light microscopy. Piroplasms in red blood cells (RBC) were evident
60 (Figure 2). A stress leukon of lymphopaenia with thrombocytopaenia was evident (Table
61 1). The foal died 24 hrs after birth. Microscopic examination of a Wright-Giemsa ®
62 stained peripheral blood smear from the mare was negative for piroplasms.

63 Materials and methods

64 *Reverse line blot (RLB)*

65 DNA was extracted from 100 µL of EDTA blood from the foal and the mare
66 using the DNeasy blood and tissue kit (Qiagen Sciences Maryland, USA) according to
67 the manufactures instructions. The 18S rRNA gene for *Babesia /Theileria* was amplified
68 using primers F2 and R2 as described previously (Gubbels et al., 1999). DNA of *B. canis*
69 *rossi* was used as a positive control and PCR grade water (Sigma St. Louis MO, USA)
70 was used as a negative control. The amplified products were then subjected to the reverse
71 line blot (RLB) hybridization process (Gubbels et al., 1999).The oligonucleotide probes
72 that were attached to the membrane for the RLB are listed in Table 2.(Matjila et al., 2005;
73 Nagore et al., 2004)

74 *Nested PCR*

75 DNA extracted from the blood of the mare was then shipped to the University of
76 Georgia , USA and subjected to a nested PCR for the *Babesia* or *Theileria* 18S rRNA

77 gene using primary primers 5.1 and B (Medlin et al., 1989; Yabsley et al., 2005) followed
78 by a secondary reaction using primers F and R as described (Gubbels et al., 1999). To
79 prevent and detect contamination, DNA extraction, primary and secondary amplification,
80 and product analysis were done in separate dedicated areas. Two negative water controls
81 were included in each set of DNA extractions and 1 water control was included in each
82 set of primary and secondary PCR reactions. A blood sample from a white-tailed deer
83 (*Odocoileus virginianus*) naturally infected with *Theileria cervi* was used as a PCR-
84 positive control. To confirm identity, the positive sample was sequenced. The amplicon
85 was purified with a commercial gel-purification kit (QIAGEN, Valencia, CA) and
86 submitted to Clemson University Genomics Institute (Clemson, SC) for bi-directional
87 sequencing using the F and R primers.

88 Results

89 A high parasitaemia (63%) was noted in the thin blood smear from the foal. There
90 were on average 1-3 organisms per infected RBC. The RBC and haematocrit (HCT)
91 levels were on the low end of the reference interval (Weiss and Wardrop, 2010). Based on
92 the results of the RLB, the foal was infected with *T. equi* only (Figure 3). The mare tested
93 negative by RLB but an amplicon of ~ 550 bp was obtained by nested PCR analysis. The
94 nucleotide sequence (504 bp) obtained from the mare was 99.8% similar to *T. equi*
95 sequences from equines from Spain (AY 150062) and South Africa (EU 642508,
96 Z15105).

97 Discussion

98 Clinical signs of icterus and haemoglobinuria as well as reductions in the number
99 of red blood cells and platelets, reduction in haemoglobin concentration and leukopaenia

100 are common in equine babesiosis (de Waal, 1992). Hyperbilirubinaemia is due to
101 haemolytic anaemia. Haemolysis may be a result of mechanical damage to erythrocytes
102 by trophozoite intra-erythrocytic binary fission and toxic damage by haemolytic factors
103 produced by the parasite. The foal was anaemic, however the degree of true anaemia may
104 not be reflected on the foal's haemogramme because of the sharp increase in RBC
105 parameters at birth. During the first 12 hrs, transfusion of placental blood to the foal from
106 the mare increases the foals RBC parameters which then decline sharply over 12-24 hrs
107 (Weiss and Wardrop, 2010). Mild anisocytosis is also commonly observed.(Weiss and
108 Wardrop, 2010).

109 Our case has demonstrated that carrier mares can transmit *T. equi* to their foals
110 and such foals born at term can have an overwhelming parasitaemia. If icterus is not
111 observed immediately after birth, these cases of neonatal piroplasmosis could be
112 mistaken for neonatal isoerythrolysis.

113 Allsopp *et al* (2007) suggested that neonatal equine piroplasmosis may be
114 acquired during days 40 – 150 of gestation which corresponds to the histotrophic when
115 the embryo is exposed to a mixture of uterine gland secretions, desquamated epithelial
116 cells and maternal erythrocytes (histotroph). A study which used medically induced
117 abortions in *T. equi* serologically positive mares, detected *T. equi* DNA in all aborted
118 foetuses. In that study, the earliest abortion was at day130 of gestation (Allsopp et al.,
119 2007). However, microscopic examination of peripheral blood smears was not performed
120 in that study, hence the level of parasitaemia in the aborted foals and mares was
121 unknown. A report of transplacental transmission of *T. equi* has been described in
122 asymptomatic horses with no known natural exposure to the tick vector, thus indicating

123 that such carrier animals may act as reservoirs to establish equine piroplasmosis in areas
124 where competent tick vectors may be present (Phipps and Otter, 2004). The severely
125 icteric foal in our study had a 63% parasitaemia of *T. equi*, however, no piroplasms were
126 observed on light microscopy of Wright-Giemsa® stained peripheral blood smears of the
127 mare. The RLB was also not sensitive enough to detect *T. equi* DNA in the blood of the
128 mare but *T. equi* was detected using a nested PCR. The negative RLB result in the mare
129 in our study may be due to a very low level of parasitaemia which was below the limit of
130 detection of the RLB. The detection limit for the RLB for bovine piroplasms was
131 estimated by Gubbels *et al* to be 10^{-6} % which corresponded to 3 parasites per μ l of blood
132 (Gubbels et al., 1999).

133 The economic importance of transplacental transmission of equine piroplasmosis
134 on the thoroughbred industry in Trinidad needs further investigation as many cases may
135 be misdiagnosed. We therefore recommend that all icteric foals born in endemic areas
136 should be screened for neonatal piroplasmosis. This is the first reported case of neonatal
137 piroplasmosis in Trinidad.

138 Acknowledgements:

139 The authors would like to thank Mrs Agnes Williams for her technical support.

140 Figure 1 Icteric sclera and conjunctiva of neonatal foal at 10 h post- partum

141 Figure 2 Red blood cells (RBC) of foal infected with *T. equi* piroplasms. There were 126

142 infected RBCs per high power field (HPF). There are approximately 200 RBC per HPF

143 (100x oil objective).

144 Figure 3 RLB hyperfilm result for foal diplomacy (b) (1, *Babesia/Theileria* genera probe;

145 2, *Babesia canis rossi*; 3, *Babesia caballi*; 4, *Theileria equi*). a, b, c (equine samples), d

146 positive control DNA containing *B. canis rossi*, e (negative control)

147

148 References

149

150 Allsopp, M.T.E.P., Lewis, B.D., Penzhorn, B.L., 2007, Molecular evidence for

151 transplacental transmission of *Theileria equi* from carrier mares to their

152 apparently healthy foals. *Vet. Parasitol.* 148, 130-136.

153 Asgarali, Z., Coombs, D.K., Mohammed, F., Campbell, M.D., Caesar, E., 2007, A

154 serological study of *Babesia caballi* and *Theileria equi* in Thoroughbreds in

155 Trinidad. *Vet. Parasitol.* 144, 167-171.

156 de Waal, D.T., 1992, Equine piroplasmiasis: a review. *Br. Vet. J.* 148, 6-14.

157 Florida Department of Agriculture and Consumer Services Division of Animal

158 Husbandry 2009. Annual Report 2008-2009.

159 Gubbels, J.M., de Vos, A.P., van der Weide, M., Viseras, J., Schouls, L.M., de Vries, E.,

160 Jongejan, F., 1999, Simultaneous detection of bovine *Theileria* and *Babesia*

161 species by Reverse Line Blot Hybridization. *J. Clin. Microbiol.* 37, 1782-1789.

162 Magnarelli, L.A., IJdo, J.W., Andel, A.E.V., Wu, C., Padula, S.J., Fikrig, E., 2000,

163 Serologic confirmation of *Ehrlichia equi* and *Borrelia burgdorferi* infections in

164 horses from the northeastern United States doi:10.2460/javma.2000.217.1045. *J.*

165 *Am. Vet. Med. Assoc.* 217, 1045-1050.

166 Matjila, T.P., Nijhof, A.M., Taoufik, A., Houwers, D., Teske, E., Penzhorn, B.L., Lange,

167 T.d., Jongejan, F., 2005, Autochthonous canine babesiosis in The Netherlands.

168 *Veterinary Parasitology* 131, 23-29.

169 Medlin, L., Elwoods, H., Stickel, S., Sogin, M., 1989, The characterization of

170 enzymatically amplified eukaryotic 16S-like rRNA coding regions. *Gene* 71, 491-

171 499.

172 Nagore, D., Garcia-Sanmartin, J., Garcia-Perez, A.L., Juste, R.A., Hurtado, A., 2004,
173 Detection and identification of equine *Theileria* and *Babesia* species by reverse
174 line blotting: epidemiological survey and phylogenetic analysis. *Veterinary*
175 *Parasitology* 123, 41-54.

176 Phipps, L.P., Otter, A., 2004, Transplacental transmission of *Theileria equi* in two foals
177 born and reared in the United Kingdom. *Vet. Rec.* 154, 406-408.

178 Rampersad, J., Cesar, E., Campbell, M.D., Samlal, M., Ammons, D., 2003, A field
179 evaluation of PCR for the routine detection of *Babesia equi* in horses. *Vet.*
180 *Parasitol.* 114, 81-87.

181 Weiss, D.J., Wardrop, K.J. 2010. *Schalm's Veterinary Hematology* (Ames, Wiley-
182 Blackwell), p. 1232.

183 Yabsley, M.J., Davidson, W.R., Stallknecht, D.E., Varela, A.S., Swift, P.K., Devos, J.C.,
184 Jr., Dubay, S.A., 2005, Evidence of tick-borne organisms in mule deer
185 (*Odocoileus hemionus*) from the western United States. *Vector Borne Zoonotic*
186 *Dis.* 5, 351-362.

187 Zobba, R., Ardu, M., Niccolini, S., Chessa, B., Manna, L., Cocco, R., Pinna Parpaglia,
188 M.L., 2008, Clinical and Laboratory Findings in Equine Piroplasmosis. *Journal of*
189 *Equine Veterinary Science* 28, 301-308.

190

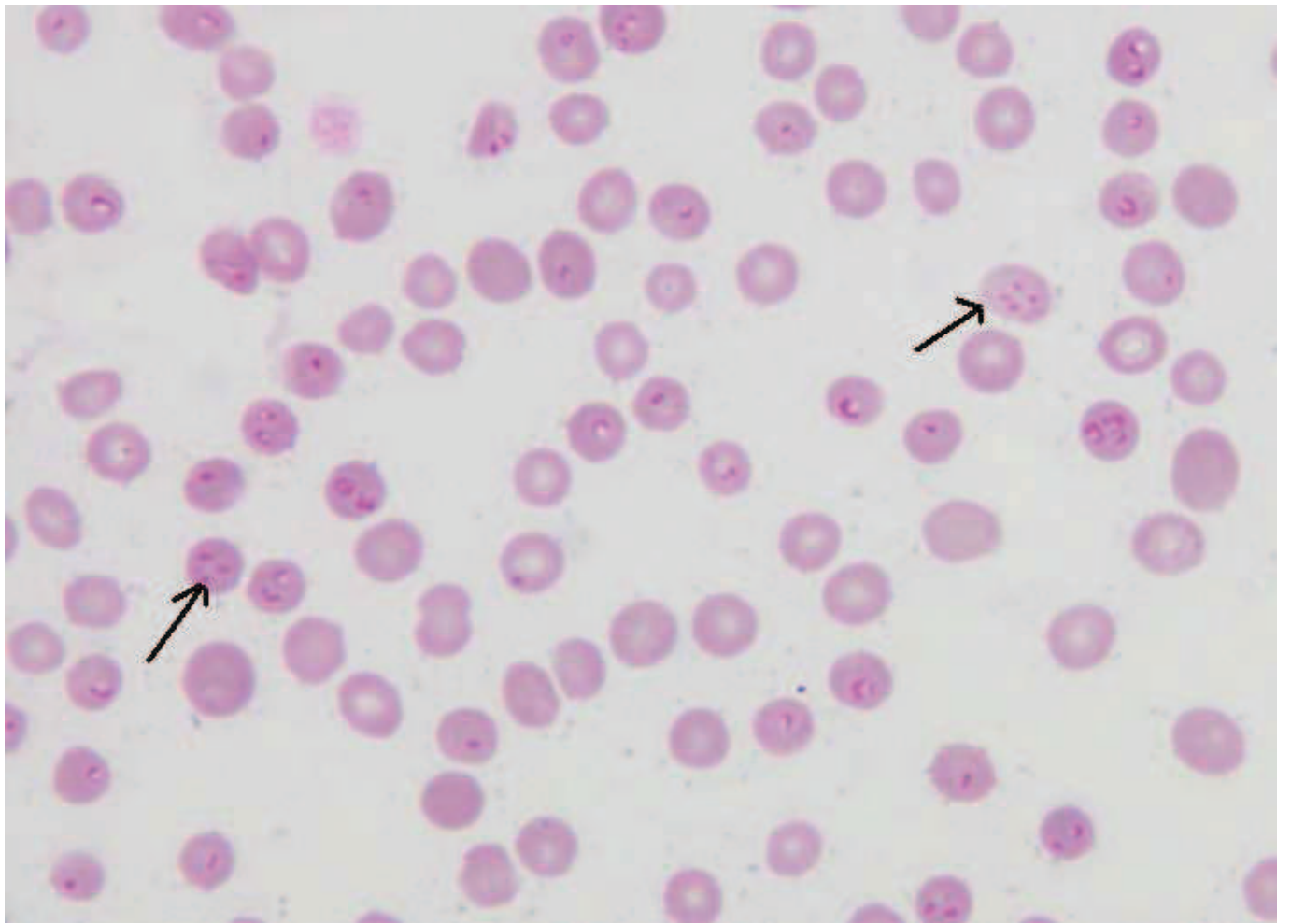
Table 1 The foal's haematological parameters at 10 hours post- partum
 Variable – Reference interval for
 Thoroughbred foals at 24 hrs¹

RBC (x 10 ¹² / L) – (9.1 – 11.9)	7.4
Hgb (g/L) – (129.0-155.0)	107.0
HCT(L/L) – (0.38 - 0.46)	0.34
MCV (fl) – (36.0 – 44.0)	46.0
MCH(pg) - (13.0 – 15.0)	14.4
Anisocytosis	2+
MCHC (g/L) – (320.0 – 360.0)	312.0
WBC (x 10 ⁹ / L) – (6.0 – 12.0)	5.0
Neutrophils (%) – (58.0-79.0)	74.0
(x 10 ⁹ / L) – (4.0-9.5)	3.7
Bands (%) – (0 – 3.0)	4.0
(x 10 ⁹ / L) – (0 - 0.1)	0.2
Metamyelocytes (%) – (0)	1.0
(x 10 ⁹ / L) - (0)	0.05
Lymphocytes (%) – (15.0 – 35.0)	10.0
(x 10 ⁹ / L) – (1.3-3.1)	0.5
Monocytes (%) – (1.0-7.0)	9.0
(x 10 ⁹ / L) – (0 -0.6)	0.45
Eosinophils (%) - (1.0-10.0)	0
(x 10 ⁹ / L)- (0 - 0.8)	
Platelets (x 10 ⁹ / L) – (100.0 – 600.0)	58.0
Protein (g/L) – (53.0 – 71.0)	68.0
Fibrinogen (g/L) – (2.1- 3.3)	5.0

1 RBC = red blood cell, Hgb = haemoglobin, HCT = haematocrit, MCV = mean
 2 corpuscular volume, MCHC = mean corpuscular haemoglobin concentration, WBC =
 3 white blood cell. ¹ Adapted from Schalm's Veterinary Hematology, Sixth Edition (ed
 4 Weiss and Wardrop, 2010)



Figure 1 Leuko-cornea and conjunctivitis of neonatal foal at 10 hrs postpartum



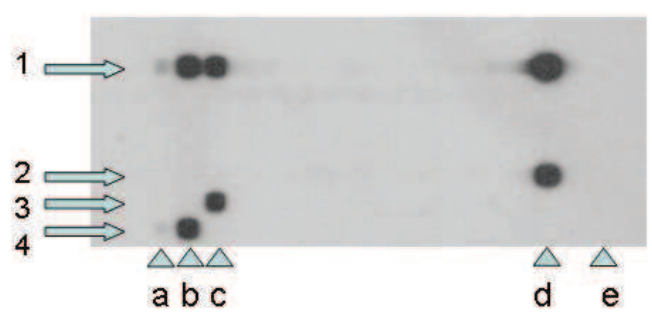


Table 2. 5'-3' sequence of oligonucleotide probes used in this study²

Oligonucleotide probe	5'-3' sequence of oligonucleotide probe	Reference
<i>Babesia/Theileria</i> genera	TAATGGTTAATAGGARCRGTTG	(Gubbels et al., 1999)
<i>Babesia caballi</i>	CGGGTTATTGACTTCGCTTTTTCTT	(Nagore et al., 2004)
<i>Babesia canis rossi</i>	CGGTTTGTTGCCTTTGTG	(Matjila et al., 2005)
<i>Theileria equi</i>	TCTGCTGTTTCGTTGACTG	GenBank Accession no. Z15105, AY150062

1

2 ²R = A or G

3